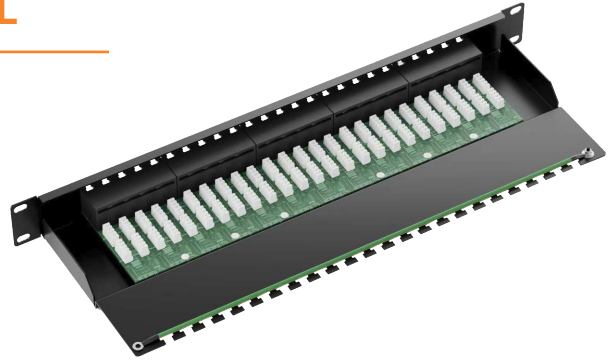
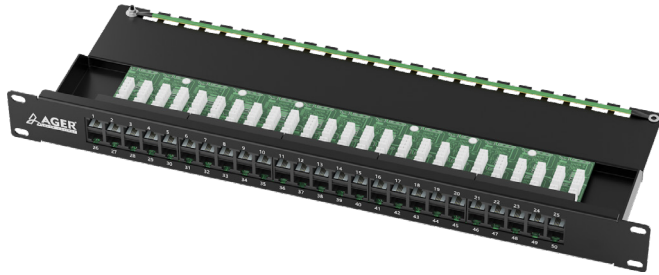


## ISDN 50 PORT TELEPHONE PANEL



### Product Overview

AGER 50 port ISDN telephone patch panels comply with ANSI/TIA/568-2-E standards. Panel connections allow for termination of 6-3 and 4-5 per combinations. The organizer area at the back ensures the order of the cables to be connected to the panel.

### Supported Protocols

- 10BASE-T Ethernet
- Token Ring 4 Mbps and 16 Mbps
- ISDN Basic and Primary Access
- 1BASE-5 Starlan
- ISALAN
- ITU V.21 and X.11
- UL94 V-0

### Product Shipment Information

PRODUCT SHIPPMENT INFORMATION	
Product Code	Product Description
ACPP3-350D-1GR	50 PORT CATEGORY 3 ISDN PATCH PANEL DOLU

### Cable Specification

MEKANİK VE FİZİKSEL ÖZELLİKLER	
BODY MATERIAL	Galvanized Steel
SUITABLE CABLE CROSS-SECTIONS	22-26 AWG,
STANDARD COLOR	Black Powder Coating.
PANEL BODY	Flame resistant, effective against fire
CONTACT MATERIAL	UL V94 V-0 Flame-retardant plastic component
OPERATING TEMPERATURE	-20°C , +60°C
STORAGE TEMPERATURE	-40°C , +70°C

