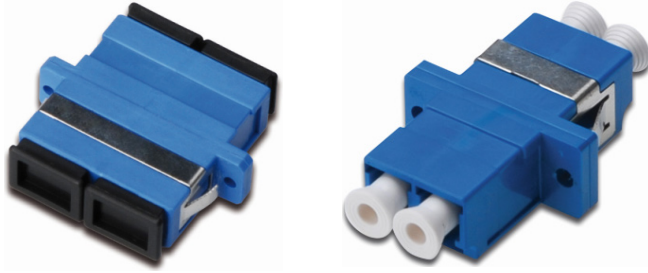


FIBER OPTIC ADAPTERS (COUPLERS)



Product Overview

AGER ceramic ferrule fiber optic connectors are an excellent complement for termination assembly in fiber optic patch panels. Thanks to continuous quality control and meticulous workmanship, the connectors guarantee optimal performance and connection quality. Each connector is equipped with a dust protection cap to protect the ferrules from dust.

Furthermore, the connectors are delivered with suitable mounting hardware, allowing them to be immediately mounted and secured to front panels. This excellent performance is also utilised for high-quality AGER pigtail cables and patchcords; the connectors on these cables interact perfectly with the connectors. Simplex, duplex or quad core options are available.

Supported Protocols

- ANSI/TIA-568.3-E
- ISO/IEC 11801 (2nd Edition)
- Telcordia
- IEC 60754
- IEC 61754
- IEC 60793
- IEC 60794
- IEC 60332-1 (for LSOH constructions)
- EIA/TIA-455
- CENELEC EN 5017

Fiber Specifications

Connector	Singlemode 9/125 μ	Singlemode 9/125 μ APC	Multimode 50/125 μ
Ferrule	Ceramic	Ceramic	Ceramic
Color	Blue	green	Grey/Aqua
Insertion loss	< 0.20 dB	$\leq 0,2$ dB	< 0.20 dB
Life cycle	max. 1000 matings	max. 1000 matings	max. 1000 matings
Operating temperature	-40 up to +85 °C	-40 up to +85 °C	-40 up to +85 °C

(Selectable from the Fibre Options table.)

(Connector Type: Zirconia Ceramic Connector Flame Test: UL-94 V-0 Connector Housing: Thermoplastic)

Product Shipping Information

PRODUCT SHIPPING INFORMATION	
Product Code	Product Description
AFAD2-1S1	SC Duplex Adapter SM
AFAD2-1M3	SC Duplex Adapter MM OM3
AFAD2-2S1	LC Duplex Adapter SM
AFAD1-2S1	LC Simplex Adapter SM
AFAD2-2M3	LC Duplex Adapter MM OM3
AFAD2-2M4	LC Duplex Adapter MM OM4

FIBER OPTIC ADAPTERS (COUPLERS)

Product Code Diagram

PRODUCT CODE DIAGRAM	
PRODUCT CLASS	AF FIBER CABLING
PRODUCT TYPE	AD ADAPTER PG PIGTAIL
DX / SX	1:SX 2:DX 4:QUAD
TYPE	1:SC 2:LC 3:SCAPC 4:LC/APC
CATEGORY	S1: SM G.552D S2: SM G655E S3: SM G657 A1 S4: SM G57 A2 M1: MM OM1 M2: MM OM2 M3: MM OM3 M4: MM OM4

