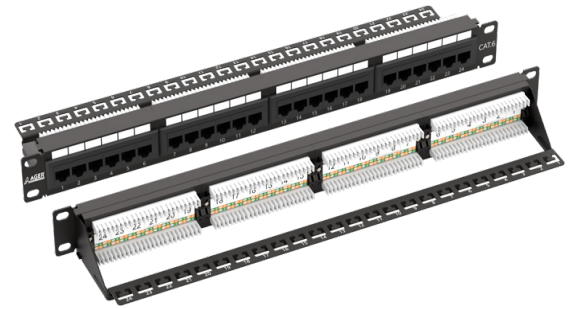


CATEGORY 6 UTP 24 PORT PATCH PANEL 1U

Product Overview

AGER UTP 24-Port Category 6 pre-terminated panel products comply with EN 50173 and ISO/IEC 11801 standards. Unlike modular patch panels, the termination sockets are integrated into the panel. They are colour-coded to comply with T568A or T568B.

They are approved to ANSI/TIA/568-2-E, ISO/IEC-11801 (2nd edition) and EN 50173.



Supported Protocols

- 10BASE-T Ethernet
- 100BASE-T2
- 100BASE-T4
- 100BASE-TX
- 100BASE-T "Fast Ethernet"
- 1000BASE-T Gigabit Ethernet
- ATM 52
- ATM 25
- ATM 155
- TP-PMD
- Token Ring 100 Mbps
- Token Ring 4 Mbps and 16 Mbps
- Broadband and Baseband Video
- ISDN Basic and Primary Access
- 1BASE-5 Starlan
- ISALAN
- ITU V.21 and X.11
- UL94 V-0

Product Shipping Information

PRODUCT SHIPPING INFORMATION	
Product Code	Product Description
ACPP6-324-1B	1U 24 Port CAT 6 Patch Panel, unshielded, 24-port RJ45, 8P8C, LSA, 1U, bl, 482x44x109 mm, black RAL 9005

Mechanical and Physical Properties

MECHANICAL AND PHYSICAL PROPERTIES	
FRAME MATERIAL	SECC, 1.5 mm galvanised, cold-rolled steel compliant with EN 1.4301
STANDARD COLOUR	Black RAL 9005
JACK, CONNECTOR SOCKET MATERIAL	UL 94 V-0
CONTACT MATERIAL	Nickel, gold plating (0.6 µm)
CONNECTION POINTS	Nickel and gold plating (0.6 µm)
COMPATIBLE CABLE LENGTHS	AWG 23–27, tool-free installation for solid or flexible cables.
COMPATIBLE CABLE DIAMETERS	5.5 mm to 6.2 mm
MINIMUM MAKE-BREAK CYCLES	750 times
OPERATING TEMPERATURE	-40°C to +70°C

CATEGORY 6 UTP 24 PORT PATCH PANEL 1U

Electrical Transmission Properties

ELECTRICAL TRANSMISSION PROPERTIES	
INSULATION RESISTANCE	500 MegaOhm•Km min. @ 500 Vdc
DC RESISTANCE	0.1 Ohm
RESISTANCE UNBALANCE	2% Max.
VOLTAGE	72 V max
DIELECTRIC STRENGTH	1000 Volts AC / 1 Minute
CURRENT	1.5 A MAX.
SIGNAL TRANSMISSION TIME (Prob. Delay)	2.5 nS Max @ 1-250 MHz
INTER-PERL SIGNAL DELAY (Scew Delay)	1.25 nS Max @ 1-250 MHz

