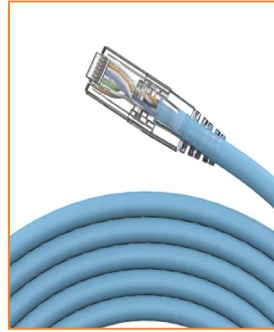


CATEGORY 6 U/UTP 24 AWG PATCH CORD



Product Overview

AGER CAT6 U/UTP Patch Cord products are standard LSOH sheathed and comply with ANSI/TIA-568-2-E and ISO/IEC-11801 (2nd version) standards. It can be offered in different colours and desired quantities.

It meets the requirements of ANSI/TIA-568.2-E and ISO/IEC-11801 (second version) standards and is subjected to regular quality tests by international test organisations.

Supported Protocols

- 10BASE-T Ethernet
- 100BASE-T2
- 100BASE-T4
- 100BASE-TX
- 100BASE-T "Fast Ethernet"
- 1000BASE-T Gigabit Ethernet
- ATM 52
- ATM 25
- ATM 155
- TP-PMD
- Token Ring 100 Mbps
- Token Ring 4 Mbps and 16 Mbps
- Broadband and Baseband Video
- ISDN Basic and Primary Access
- 1BASE-5 Starlan
- IISALAN
- UL94 V-0

Product Shipping Information

PRODUCT SHIPPING INFORMATION	
Product Code	Product Description
ACPC6-400-LA50-GR	4x2x24# U/UTP CAT 6 LSOH Patch Cord Gri 0,50 mt
ACPC6-400-LB1-GR	4x2x24# U/UTP CAT 6 LSOH Patch Cord Gri 1mt
ACPC6-400-LB2-BL	4x2x24# U/UTP CAT 6 LSOH Patch Cord Mavi 2mt
ACPC6-400-LB5-RD	4x2x24# U/UTP CAT 6 LSOH Patch Cord Sarı 3mt

Cable Specifications

MECHANICAL AND PHYSICAL PROPERTIES	
CONDUCTOR	24 AWG cross-section Flexible stranded copper 7 x 0,20 mm
CONDUCTOR WIRE COLOURS	Blue x Blue-White, Orange x -WhiteOrange-White, Green x Green-White, Brown x Brown-White
CONDUCTOR WIRE INSULATION	Polyolefin
WIRE COUNT	8 WIRE, 4 PER (twisted)
TAPE COATING	NO
FOLIO	NO

CATEGORY 6 U/UTP 24 AWG PATCH CORD

Cable Specifications

MECHANICAL AND PHYSICAL PROPERTIES	
OUTER SHELL	LS0H (LSZH) Low Smoke Halogen Free
OUTER SHELL COLOUR	Grey RAL 7035 (Different colours can be offered upon request.)
GROUNDING	NO
SPACE BETWEEN PERLERS	NO
CABLE WRITING INFORMATION	Brand, Product Code, Cable Type, Related Standard, Quantity, Batch Number
CABLE DIAMETER	5.6 mm \pm 0.5mm
OPERATING TEMPERATURE	- 20 , +60 C
STORAGE TEMPERATURE	- 20 , +80 C
TENSION VOLTAGE	10 N
PLUG CABLE TENSION FORCE	90 N
PLUG CONTRACT MATERIAL PLUG CONTRACT MATERIAL	2.54 μ m (100 μ -inch) Nickel over 1.27 μ m (50 μ -inch) gold plated
DURABILITY	750 times
BENDING RADIUS (Short Term)	8 x Cable Diameter (mm)
BENDING RADIUS (Long Term)	4 x Cable Diameter (mm)
FLAME TEST	IEC 60332-1
CONDUCTOR TEST	UL 444

Electrical Properties

ELECTRICAL CONDUCTION PROPERTIES	
INSULATION RESISTANCE	500 MegaOhm-Km min. @ 500 Vdc
DC RESISTANCE	95 Ohm/km
RESISTANCE UNBALANCE	2% Max.
VOLTAGE	72 Vdc max
DIELECTRIC RESISTANCE	1000 Volts AC / 1 Min
CURRENT	1.5 A MAX.
SIGNAL TRANSMISSION TIME (Prob. Delay)	2.5 nS Max @ 1-250 MHz
SIGNAL DELAY BETWEEN PERLERS (ScREW Delay)	1.25 nS Max @ 1-250 MHz