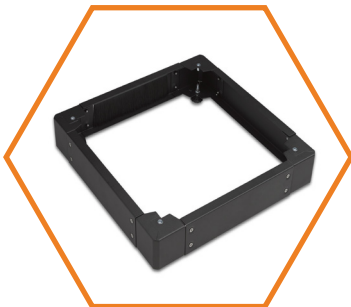
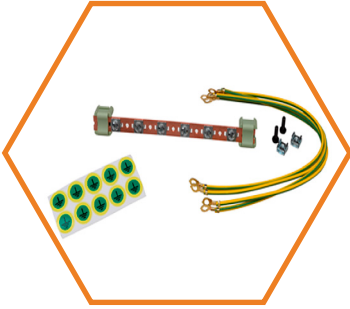
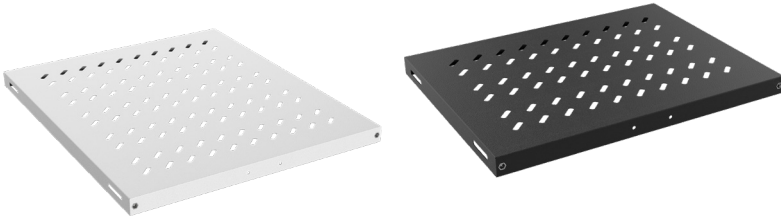


# ACCESSORIES



## FIXED SHELVES

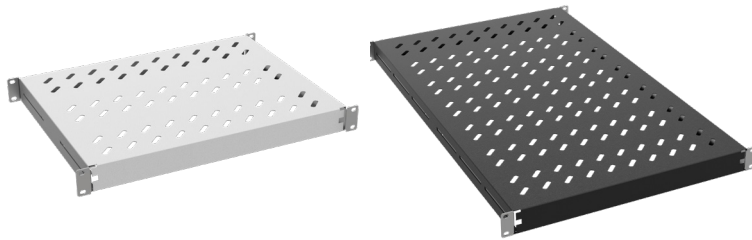


Fixed Shelves, 4 point fixing, Compatible with AGER cabinet. For allowing the convection of heated air inside cabinets, the shelves are structured with ventilation slots. Supply is in RAL 9005 Black and RAL 7035 Light Grey colors. From Steel Material, with high technology bending strengthening accessory, Load capacity 50 kg.

### FIXED SHELVES 4 POINT FIXING

Product Code	Product Description	Width (W) (mm)	Depth (D) (mm)	Height (H) (mm)	Weight (Net) (kg)	Weight (Gross) (kg)
AA-SBT60-A-XX-YY	19" FIXED SHELVES, 4 POINTS FIXING, PHYSICAL SHELF DEPTH:370MM D=600MM CABINETS, LOAD CAPACITY 50 KG	482,6	370	30	1,8	2
AA-SBT80-A-XX-YY	19" FIXED SHELVES, 4 POINTS FIXING, PHYSICAL SHELF DEPTH:570MM D=800MM CABINETS, LOAD CAPACITY 50 KG	482,6	570	30	2,5	3
AA-SBT10-A-XX-YY	19" FIXED SHELVES, 4 POINTS FIXING, PHYSICAL SHELF DEPTH:740MM D=1000MM CABINETS, LOAD CAPACITY 50 KG	482,6	770	30	3,5	3,9

XX = Colour Code, B1 White RAL 7035, S1 Black RAL 9005, during order please specify the colour choice.  
YY = M1 for pre-assembled, D1 for flat pack.

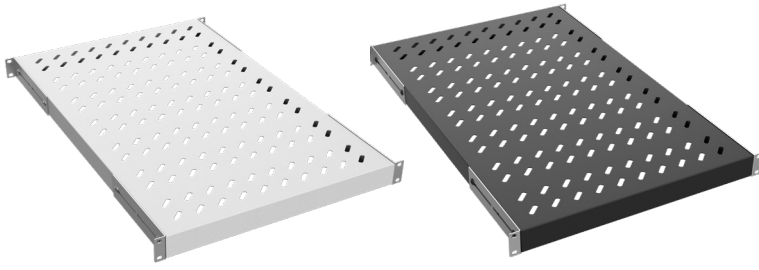


Fixed Shelves, 4 point fixing, Compatible with all brand cabinets. Adjustable brackets at depth. For allowing the convection of heated air inside cabinets, the shelves are structured with ventilation slots. Supply is in RAL 9005 Black and RAL 7035 Light Grey colors. From Steel Material, with high technology bending strengthening accessory, Load capacity 50 kg.

### FIXED SHELVES 4 POINT FIXING, UNIVERSAL MODEL

Product Code	Product Description	Width (W) (mm)	Depth (D) (mm)	Height (H) (mm)	Weight (Net) (kg)	Weight (Gross) (kg)
AA-SBT35-C-XX-YY	" FIXED SHELVES, 1U METAL BRACKET, 4 POINT FIXING, PHYSICAL SHELF DEPTH:350MM D=600MM CABINETS, LOAD CAPACITY 50 KG. COMPATIBLE WITH ALL BRAND 19" CABINETS."	482,6	350	44	2	2,4
AA-SBT50-C-XX-YY	" FIXED SHELVES, 1U METAL BRACKET, 4 POINT FIXING, PHYSICAL SHELF DEPTH:500MM D=800MM CABINETS, LOAD CAPACITY 50 KG. COMPATIBLE WITH ALL BRAND 19" CABINETS."	482,6	500	44	3	3,4
AA-SBT10-C-XX-YY	" FIXED SHELVES, 1U METAL BRACKET, 4 POINT FIXING, PHYSICAL SHELF DEPTH:735MM D=800MM CABINETS, LOAD CAPACITY 50 KG. COMPATIBLE WITH ALL BRAND 19" CABINETS."	482,6	735	44	4,2	4,8

XX = Colour Code, B1 White RAL 7035, S1 Black RAL 9005, during order please specify the colour choice.  
YY = M1 for pre-assembled, D1 for flat pack.

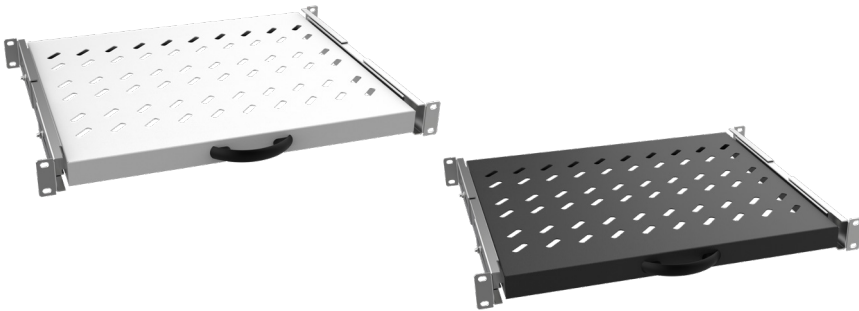


Heavy Duty Fixed Shelves, 4 point fixing, Compatible with AGER cabinets. For allowing the convection of heated air inside cabinets, the shelves are structured with ventilation slots. 1U sized. Supply is in RAL 9005 Black and RAL 7035 Light Grey colors. From Steel Material, with high technology bending strengthening accessory, Load capacity 100 kg.

HEAVY DUTY FIXED SHELVES 4 POINTS FIXING						
Product Code	Product Description	Width (W) (mm)	Depth (D) (mm)	Height (H) (mm)	Weight (Net) (kg)	Weight (Gross) (kg)
AA-ASB10-A-XX-YY	" 19" HEAVY DUTY FIXED SHELVES, 1U, 4 POINT FIXING, PHYSICAL SHELF DEPTH :720MM D=1000MM CABINETS, LOAD CAPACITY 100 KG"	482,6	720	44	4,2	4,7

XX = Colour Code, B1 White RAL 7035, S1 Black RAL 9005, during order please specify the colour choice.  
YY = M1 for pre-assembled, D1 for flat pack.

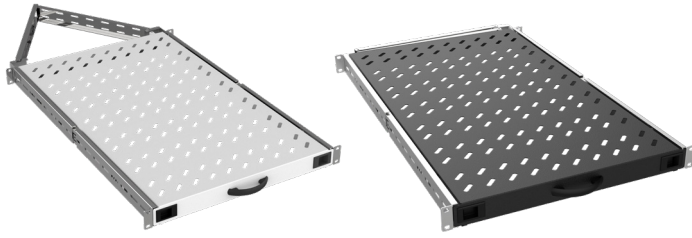
## SLIDING SHELVES



Sliding Shelves, 4 point fixing, Compatible with all brand cabinets Multivendor. Adjustable brackets at depth. For allowing the convection of heated air inside cabinets, the shelves are structured with ventilation slots. Supply is in RAL 9005 Black and RAL 7035 Light Grey colors. From Steel Material, with high technology bending strengthening accessory, Load capacity 30 kg.

SLIDING SHELVES 4 POINT FIXING, MULTIVENDOR, Compatible With All Brand Cabinets						
Product Code	Product Description	Width (W) (mm)	Depth (D) (mm)	Height (H) (mm)	Weight (Net) (kg)	Weight (Gross) (kg)
AA-HRR60-A-XX-YY	"19" SLIDING SHELVES 4 POINT FIXING, PHYSICAL SHELF DEPTH:370MM D=600MM CABINETS, LOAD CAPACITY 30 KG. COMPATIBLE WITH ALL BRAND 19" CABINETS."	482,6	370	44	2,4	2,7
AA-HRR80-A-XX-YY	"19" SLIDING SHELVES 4 POINT FIXING, PHYSICAL SHELF DEPTH:570MM D=800MM CABINETS, LOAD CAPACITY 30 KG. COMPATIBLE WITH ALL BRAND 19" CABINETS."	482,6	570	44	3,3	3,6
AA-HRR10-A-XX-YY	"19" SLIDING SHELVES 4 POINT FIXING, PHYSICAL SHELF DEPTH:740MM D=800MM CABINETS, LOAD CAPACITY 30 KG. COMPATIBLE WITH ALL BRAND 19" CABINETS."	482,6	740	44	4,6	4,9

XX = Colour Code, B1 White RAL 7035, S1 Black RAL 9005, during order please specify the colour choice.  
YY = M1 for pre-assembled, D1 for flat pack.



Heavy Duty Sliding Shelves, 4 point fixing, Compatible with all brand cabinets. For allowing the convection of heated air inside cabinets, the shelves are structured with ventilation slots. 1U sized. Adjustable brackets at depth. With this feature the item can be assembled to any brand cabinet. Supply is in RAL 9005 Black and RAL 7035 Light Grey colors. From Steel Material, with high technology bending strengthening accessory, Load capacity 50 kg.

#### HEAVY DUTY SLIDING SHELVES 4 POINT FIXING

Product Code	Product Description	Width (w) (mm)	Depth (d) (mm)	Height (h) (mm)	Weight (Net) (kg)	Weight (Gross) (kg)
AA-AHR10-A-XX-YY	19" HEAVY DUTY SLIDING SHELVES 4 POINT FIXING, PHYSICAL SHELF DEPTH :720MM D=1000MM CABINETS. LOAD CAPACITY 50 KG, FULL TELESCOPIC.	486	720	44	6,1	6,7
AA-AHR10-AKRO-A-XX-YY	19" HEAVY DUTY SLIDING SHELVES, 1U 19", 4 POINT FIXING, PHYSICAL SHELF DEPTH :720MM D=1000MM CABINETS. LOAD CAPACITY 50 KG, FULL TELESCOPIC. CABLE ORGANISER WITH ACROBAT ARM ATTACHMENT.	482,6	720	44	6,1	6,7

XX = Colour Code, B1 White RAL 7035, S1 Black RAL 9005, during order please specify the colour choice.  
YY = M1 for pre-assembled, D1 for flat pack.

#### RACK MOUNT SHELVES



The assembly should be frontal assembly to the equipment mounting rails. For allowing the convection of heated air inside cabinets, the shelves are structured with ventilation slots. Supply is in RAL 9005 Black and RAL 7035 Light Grey colors. From Steel Material, with high technology bending strengthening accessory, Load capacity 30 kg.

#### RACK MOUNT SHELVES 2 POINT FIXING

Product Code	Product Description	Width (w) (mm)	Depth (d) (mm)	Height (h) (mm)	Weight (Net) (kg)	Weight (Gross) (kg)
AA-RMR01U20-B-XX-YY	"19" 1U D=200MM RACK MOUNT 2 POINT FIXING SHELVES, LOADING CAPACITY 30 KG"	482,6	200	44	0,9	1,1
AA-RMR01U25-B-XX-YY	"19" 1U D=250MM RACK MOUNT 2 POINT FIXING SHELVES, LOADING CAPACITY 30 KG"	482,6	250	44	1,1	1,3
AA-RMR01U30-B-XX-YY	"19" 1U D=300MM RACK MOUNT 2 POINT FIXING SHELVES, LOADING CAPACITY 30 KG"	482,6	300	44	1,3	1,6
AA-RMR01U35-B-XX-YY	"19" 1U D=350MM RACK MOUNT 2 POINT FIXING SHELVES, LOADING CAPACITY 30 KG"	482,6	350	44	1,5	1,8
AA-RMR01U40-B-XX-YY	"19" 1U D=400MM RACK MOUNT 2 POINT FIXING SHELVES, LOADING CAPACITY 30 KG"	482,6	400	44	1,7	2,1
AA-RMR02U25-B-XX-YY	"19" 2U D=250MM RACK MOUNT 2 POINT FIXING SHELVES, LOADING CAPACITY 30 KG"	482,6	250	88	1,3	1,6
AA-RMR02U30-B-XX-YY	"19" 2U D=300MM RACK MOUNT 2 POINT FIXING SHELVES, LOADING CAPACITY 30 KG"	482,6	300	88	1,7	2
AA-RMR02U35-B-XX-YY	"19" 2U D=350MM RACK MOUNT 2 POINT FIXING SHELVES, LOADING CAPACITY 30 KG"	482,6	350	88	2,1	2,4
AA-RMR02U40-B-XX-YY	"19" 2U D=400MM RACK MOUNT 2 POINT FIXING SHELVES, LOADING CAPACITY 30 KG"	482,6	400	88	2,5	2,8

XX = Colour Code, B1 White RAL 7035, S1 Black RAL 9005, during order please specify the colour choice.  
YY = M1 for pre-assembled, D1 for flat pack.

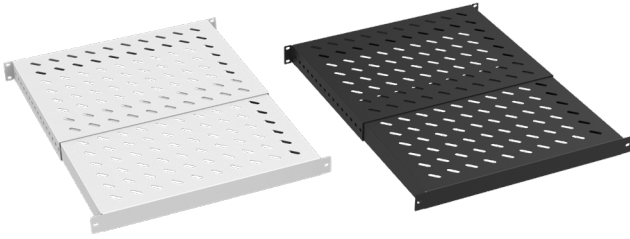


The assembly should be frontal assembly to the equipment mounting rails. It is an accessory that can be mounted from 4 points by means of the Depth Adjustable Side Arms at the back. Ventilation slots are placed in order not to interfere with the ventilation system. It is supplied in RAL 9005 Black and RAL 7035 Light Grey colours. It is an accessory with high strength structured from steel material with bending technology. Carrying capacity is 50 kg.

#### RACK MOUNT SHELVES 4 POINT FIXING

Product Code	Product Description	Width (w) (mm)	Depth (D) (mm)	Height(H) (mm)	Weight (Net) (kg)	Weight (Gross) (kg)
AA-RMR01U35-11-B-XX-YY	1U 19" FROM THE FRONT, 1 U 19" REAR MOUNTING AREA, ADJUSTABLE SIDE ARM SYSTEM, D=350MM, 19" IN ALL CABINETS FOR USE, LOADING CAPACITY 50KG	482,6	350	44	2,2	2,6
AA-RMR02U35-21-B-XX-YY	2U 19" FROM THE FRONT, 1 U 19" REAR MOUNTING AREA, ADJUSTABLE SIDE ARM SYSTEM, D=350MM, 19" IN ALL CABINETS FOR USE, LOADING CAPACITY 50KG	482,6	350	88	2,1	2,4
AA-RMR01U45-11-B-XX-YY	1U 19" FROM THE FRONT, 1 U 19" REAR MOUNTING AREA, ADJUSTABLE SIDE ARM SYSTEM, D=450MM, 19" IN ALL CABINETS FOR USE, LOADING CAPACITY 50KG	482,6	450	44	2,4	2,7
AA-RMR02U45-21-B-XX-YY	2U 119" FROM THE FRONT, 1 U 19" REAR MOUNTING AREA, ADJUSTABLE SIDE ARM SYSTEM, D=450MM, 19" IN ALL CABINETS FOR USE, LOADING CAPACITY 50KG	482,6	450	88	2,7	3,1
AA-RMR02U55-21-B-XX-YY	2U 19" FROM THE FRONT, 1 U 19" REAR MOUNTING AREA, ADJUSTABLE SIDE ARM SYSTEM, D=550MM, 19" IN ALL CABINETS FOR USE, LOADING CAPACITY 50KG	482,6	550	88	3,3	3,7
AA-RMR02U65-21-B-XX-YY	2U 19" FROM THE FRONT, 1 U 19" REAR MOUNTING AREA, ADJUSTABLE SIDE ARM SYSTEM, D=650MM, 19" IN ALL CABINETS FOR USE, LOADING CAPACITY 50KG	482,6	650	88	3,5	4

XX = Colour Code, B1 White RAL 7035, S1 Black RAL 9005, during order please specify the colour choice.  
YY = M1 for pre-assembled, D1 for flat pack.



Front and rear connections can be made to the device mounting uprights. Ventilation slots are placed so as not to interfere with the ventilation system. Available in RAL 9005 Black and RAL 7035 Light Grey. It is a high strength accessory made of steel material with bending technology. Carrying capacity is 50 kg.

#### ADJUSTABLE FIXED SHELVES 6 POINT FIXING

Product Code	Product Description	Width (w) (mm)	Depth (D) (mm)	Height(H) (mm)	Weight (Net) (kg)	Weight (Gross) (kg)
AA-AHR01U193560-A-XX-YY	19 INCH HEAVY DUTY SLIDING SHELVES 6 POINT FIXING (SHELVES DEPTH MAX=597MM MIN=345,5MM) (CABINET DEPTH 600MM FOR USE.) LOADING CAPACITY 50 KG	482	346	45	2,4	2,7

XX = Colour Code, B1 White RAL 7035, S1 Black RAL 9005, during order please specify the colour choice.  
YY = M1 for pre-assembled, D1 for flat pack.

## STORAGE DRAWERS



General purpose storage drawers, could house various user manuals, software CDs secure way. Additionally can be integrated with Keyboard. Supply is in RAL 9005 Black and RAL 7035 Light Grey colors. Steel Material is used, with high technology bending strengthening accessory, Load capacity 50 kg.

GENERAL STORAGE DRAWERS						
Product Code	Product Description	Width (w) (mm)	Depth (D) (mm)	Height(H) (mm)	Weight (Net) (kg)	Weight (Gross) (kg)
AA-CMC01U40-A-XX-YY	1U 19" KEYBOARD AND GENERAL PURPOSE STORAGE DRAWERS D=400MM	482	405	44	3,6	4
AA-CMC02U40-A-XX-YY	2U 19" KEYBOARD AND GENERAL PURPOSE STORAGE DRAWERS D=400MM	482	405	88	5,5	6
AA-CMC03U40-A-XX-YY	3U 19" KEYBOARD AND GENERAL PURPOSE STORAGE DRAWERS D=400MM	482	405	130	7,1	7,7

XX = Colour Code, B1 White RAL 7035, S1 Black RAL 9005, during order please specify the colour choice.  
YY = M1 for pre-assembled, D1 for flat pack.

## L SHAPED SUPPORT RAIL



L shaped Support Rails connecting the front and rear 19" rails, Rack mount equipments, shelves or equipments without 19" assembly brackets safely could be housed inside the cabinet with the accessory. Corrosion resistance gained by DX51D. Load Capacity 100 kg.

L SHAPED SUPPORT RAILS						
Product Code	Product Description	Width (w) (mm)	Depth (D) (mm)	Height(H) (mm)	Weight (Net) (kg)	Weight (Gross) (kg)
AA-LDT60-A-GV	L DESTEK D=600MM FOR USE, DX51D GALVANISED SHEET METAL	44	299	44	0,8	1,1
AA-LDT80-A-GV	L DESTEK D=800MM FOR USE, DX51D GALVANISED SHEET METAL	44	499	44	1,3	1,6
AA-LDT10-A-GV	L DESTEK D=1000MM FOR USE, DX51D GALVANISED SHEET METAL	44	673	44	1,6	2

XX = Colour Code, B1 White RAL 7035, S1 Black RAL 9005, during order please specify the colour choice.  
YY = M1 for pre-assembled, D1 for flat pack.



L Shaped Sliding Adjustable Support Rails that connect between uprights are compatible with all 19" rack cabinets. It is an accessory for securely housing rack mount units, racks or 19" freestanding equipment inside the cabinet. DX51D galvanised sheet metal production provides corrosion resistance. Carrying capacity is 100kg.

L SHAPED SLIDING SUPPORT RAILS, UNIVERSAL MODEL						
Product Code	Product Description	Width (w) (mm)	Depth (D) (mm)	Height(H) (mm)	Weight (Net) (kg)	Weight (Gross) (kg)
AA-HLDT6080-A-GV	L SHAPED SLIDING SUPPORT RAILS D=600MM VE D=800MM FOR USE, DX51D GALVANISED SHEET METAL	-	370-570	48	2,4	2,7
AA-HLDT8010-A-GV	L SHAPED SLIDING SUPPORT RAILS D=800MM VE D=1000MM FOR USE, DX51D GALVANISED SHEET METAL	-	450-770	48	3,2	3,5

XX = Colour Code, B1 White RAL 7035, S1 Black RAL 9005, during order please specify the colour choice.  
YY = M1 for pre-assembled, D1 for flat pack.

## BASE GROUP: CASTER, FEET, FLOOR FIXING KIT



Adjustable feet group, and 360 degree full mobile on y axis caster sets, each set is of 4 which 2 are with brakes, 2 are without brakes. Floor Fixing Kits integration to W=600 and W=800mm Cabinets while product is in use with leveling feet, for purpose of Securing the cabinet against tilting risk and vibration. From Steel Material, Supply is in RAL 9005 Black and RAL 7035 Light Grey colors.

BASE GROUP: CASTER, FEET, FLOOR FIXING KIT						
Product Code	Product Description	Width (w) (mm)	Depth (D) (mm)	Height(H) (mm)	Weight (Net) (kg)	Weight (Gross) (kg)
AA-TKR5525-A-PS	FREE STANDING CASTER SET, 1 SET=4 PCS, 2 PCS WITH BRAKE, 2 PCS WITHOUT BRAKE	55	25	-	2	2,2
AA-TKR5020-A-PS	FREE STANDING CASTER SET, 1 SET=4 PCS, M10 ONE POINT FIXING	-	-	-	0,8	1
AA-PNY1040-A-PS	PVC PINION FEET SET 1 SET=4 PCS M10X35 MM	-	-	-	0,2	0,3
AA-PNY1060-A-MT	METAL PINION FEET SET 1 SET=4 PCS, M10X60MM	-	-	-	0,44	0,54
AA-PNY1090-A-MT	METAL PINION FEET SET 1 SET=4 PCS, M10X90MM	-	-	-	0,5	0,6

XX = Colour Code, B1 White RAL 7035, S1 Black RAL 9005, during order please specify the colour choice.  
YY = M1 for pre-assembled, D1 for flat pack.

## GROUNDING SETS



4 grounding cables 4mm diameter Yellow/Green, 40cm length, used for main grounding and potential equalisation.

GROUNDING SETS						
Product Code	Product Description	Width (w) (mm)	Depth (D) (mm)	Height(H) (mm)	Weight (Net) (kg)	Weight (Gross) (kg)
AA-TPR-001-A-CU	220MM BUSBAR GROUNDING SET, 6 GROUNDING POINTS, 4X2.5MM DIAMETER X 40CM LENGTH YELLOW/GREEN CABLE, FOR POTENTIAL EQUALIZATION OF BASIC CABINET CHASSIS AND PANELS.	-	-	-	0,2	0,2
AA-TPR-002-A-CU	780MM LONG VERTICAL MOUNTING TPR SET, 2 PCS 23X2=46 CONNECTION TPR POINTS, 4 PCS 2.5MM DIAMETER X 40CM YELLOW/GREEN CABLE.	25	25	780	1,5	1,7
AA-TPR-012-A-CU-XX-YY	1U 19INCH 400MM GROUNDING SET WITH BARALI KAPAM PANEL, 12 GROUNDING POINTS, 4 PCS X 2.5MM DIAMETER X 40CM LENGTH YELLOW/GREEN CABLE, FOR POTENTIAL EQUALIZATION OF BASIC CABINET CHASSIS AND PANELS.	482	30	45	0,7	0,9

XX = Colour Code, B1 White RAL 7035, S1 Black RAL 9005, during order please specify the colour choice.  
YY = M1 for pre-assembled, D1 for flat pack.

## FIXING HARDWARE/BAYING KIT



Baying Kit for Free Standing Cabinets while in use without side panels. M6 Steel caged Nut Set, Screw and Nuts included, 20pcs set and 50 pcs set, and cabinet connection kit set accessories.

FIXING HARDWARE/ BAYING KIT						
Product Code	Product Description	Width (w) (mm)	Depth (d) (mm)	Height(h) (mm)	Weight (Net) (kg)	Weight (Gross) (kg)
AA-K04M6-A-XX-YY	M6 CAGE NUT SET, 1 SET 4 PCS, SCREW, NUT, WASHER	-	-	-	0,032	-
AA-K10M6-A-XX-YY	M6 CAGE NUT SET, 1 SET 10 PCS, SCREW, NUT, WASHER	-	-	-	0,08	-
AA-K20M6-A-XX-YY	M6 CAGE NUT SET, 1 SET 20 PCS, SCREW, NUT, WASHER	-	-	-	0,16	-
AA-K28M6-A-XX-YY	M6 CAGE NUT SET, 1 SET 28 PCS, SCREW, NUT, WASHER	-	-	-	0,24	-
AA-K50M6-A-PS	M6 CAGE NUT SET, 1 SET 50 PCS, SCREW, NUT, WASHER	-	-	-	0,39	-
AA-K60M6-A-PS	M6 CAGE NUT SET, 1 SET 60 PCS, SCREW, NUT, WASHER	-	-	-	0,45	-

XX = Colour Code, B1 White RAL 7035, S1 Black RAL 9005, during order please specify the colour choice.  
YY = M1 for pre-assembled, D1 for flat pack.

## SENSORED LIGHTING MODULE



19" 1U, turning function up/down, automatically operating once door is open, closing once door is closed or no movement detected in 60 seconds.

SENSORED LIGHTING MODULE				
Product Code	Product Description	Width (w) (mm)	Depth (d) (mm)	Height(h) (mm)
AA-AYD01U19-A-PS	LIGHTING MODULE 1U 19", WITH DOOR SWITCH -AUTOMATICALLY LIGHTS UP WHEN DOORS ARE OPENED, LED LIGHTING, WITH ROTATION FUNCTION	482	35	44
AA-AYDOT-B	MAGNETIC LED LIGHTING MODULE WHITE	22	20	270
AA-AYDOT-B-OT-SW	STANDARD OUTDOOR MAGNETIC LED LIGHTING MODULE + DOOR SWITCH 220 VOLT WHITE	22	20	270
AA-AYDOT-OS-SW	FIELD PANEL MAGNETIC LED LIGHTING MODULE + DOOR SWITCH 220 VOLT WHITE	22	20	270
AA-AYD01U19-A-PS	01U 19 INCH, DOOR SWITCH, ROTATION FUNCTION, LED LIGHTING MODULE (9005 BLACK)	45	56	520
AA-AYD01U19-A-PS-HTM	0.5U 19 INCH MOTION SENSOR SINGLE COLOR LED LIGHTING MODULE WITH MAGNETIC HOLDER	25	35	485

XX = Colour Code, B1 White RAL 7035, S1 Black RAL 9005, during order please specify the colour choice.  
YY = M1 for pre-assembled, D1 for flat pack.

## BASE GROUP; PLINTHS



H:100mm It is a completely monoblock welded accessory designed to create a wiring reserve at the bottom of the cabinet and to raise the cabinet from its floor. Metal production accessory is supplied in RAL 7035 Light Gray Color. It is a high strength accessory structured from steel material with bending technology. Carrying capacity is 1000 kg.

### PLINTHS

Product Code	Product Description	Width (w) (mm)	Depth (D) (mm)	Height(H) (mm)	Weight (Net) (kg)	Weight (Gross) (kg)
VG-BAZ6060-A-XX-YY	FREE STANDING PLINTH H=100MM W=600MM D=600MM MONOBLOCK WELDED	600	600	100	4,5	5,3
VG-BAZ6080-A-XX-YY	FREE STANDING PLINTH H=100MM W=600MM D=800MM MONOBLOCK WELDED	600	800	100	5,5	6,4
VG-BAZ6010-A-XX-YY	FREE STANDING PLINTH H=100MM W=600MM D=1000MM MONOBLOCK WELDED	600	1000	100	6,5	7,3
VG-BAZ6011-A-XX-YY	FREE STANDING PLINTH H=100MM W=600MM D=1100MM MONOBLOCK WELDED	600	1100	100	7	7,8
VG-BAZ6012-A-XX-YY	FREE STANDING PLINTH H=100MM W=600MM D=1200MM MONOBLOCK WELDED	600	1200	100	7,5	8,3
VG-BAZ8060-A-XX-YY	FREE STANDING PLINTH H=100MM W=800MM D=600MM MONOBLOCK WELDED	800	600	100	5,4	6,3
VG-BAZ8080-A-XX-YY	FREE STANDING PLINTH H=100MM W=800MM D=800MM MONOBLOCK WELDED	800	800	100	6	6,9
VG-BAZ8010-A-XX-YY	FREE STANDING PLINTH H=100MM W=800MM D=1000MM MONOBLOCK WELDED	800	1000	100	6,6	7,5
VG-BAZ8011-A-XX-YY	FREE STANDING PLINTH H=100MM W=800MM D=1100MM MONOBLOCK WELDED	800	1100	100	6,9	7,8
VG-BAZ8012-A-XX-YY	FREE STANDING PLINTH H=100MM W=800MM D=1200MM MONOBLOCK WELDED	800	1200	100	7,2	8,1

XX = Colour Code, B1 White RAL 7035, S1 Black RAL 9005, during order please specify the colour choice.  
YY = M1 for pre-assembled, D1 for flat pack.

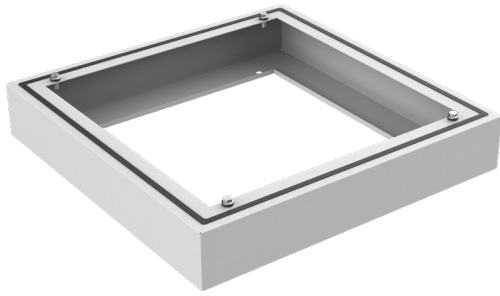


H:100mm This is a fully modular accessory designed to create a cable reserve at the bottom of the cabinet and to elevate the cabinet from the floor. There is a brushed cable entry opening at the rear. The metal accessory is supplied in RAL 9005 Black and RAL 7035 Light Gray colors. It is a high-strength accessory constructed using steel bending technology. Its load capacity is 1000 kg.

### PLINTHS

Product Code	Product Description	Width (w) (mm)	Depth (D) (mm)	Height(H) (mm)	Weight (Net) (kg)	Weight (Gross) (kg)
VG-BAZ6060-C-XX-YY	FREE STANDING BASE GROUP H=100MM W=600MM D=600MM MODULAR	600	600	100	5,2	6,3
VG-BAZ6080-C-XX-YY	FREE STANDING BASE GROUP H=100MM W=600MM D=800MM MODULAR	600	800	100	6,4	7,9
VG-BAZ6010-C-XX-YY	FREE STANDING BASE GROUP H=100MM W=600MM D=1000MM MODULAR	600	1000	100	6,9	8,2
VG-BAZ6011-C-XX-YY	FREE STANDING BASE GROUP H=100MM W=600MM D=1100MM MODULAR	600	1100	100	7,2	7,5
VG-BAZ6012-C-XX-YY	FREE STANDING BASE GROUP H=100MM W=600MM D=1200MM MODULAR	600	1200	100	7,5	7,8
VG-BAZ8060-C-XX-YY	FREE STANDING BASE GROUP H=100MM W=800MM D=600MM MODULAR	800	600	100	7,2	7,9
VG-BAZ8080-C-XX-YY	FREE STANDING BASE GROUP H=100MM W=800MM D=800MM MODULAR	800	800	100	7,1	8,9
VG-BAZ8010-C-XX-YY	FREE STANDING BASE GROUP H=100MM W=800MM D=1000MM MODULAR	800	1000	100	7,5	9,2
VG-BAZ8011-C-XX-YY	FREE STANDING BASE GROUP H=100MM W=800MM D=1100MM MODULAR	800	1100	100	7,7	8,4
VG-BAZ8012-C-XX-YY	FREE STANDING BASE GROUP H=100MM W=800MM D=1200MM MODULAR	800	1200	100	7,9	8,6

XX = Colour Code, B1 White RAL 7035, S1 Black RAL 9005, during order please specify the colour choice.  
YY = M1 for pre-assembled, D1 for flat pack.



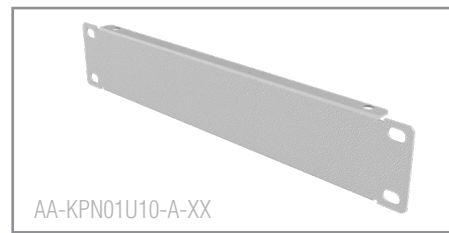
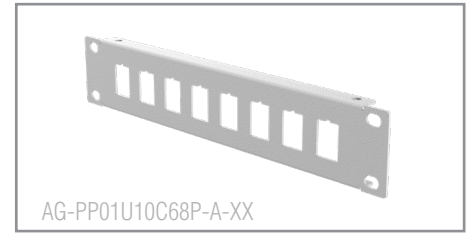
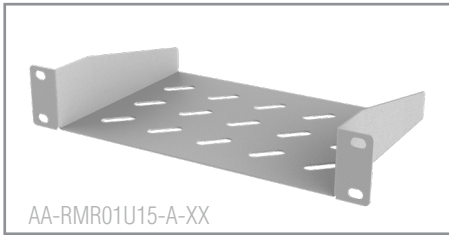
H:100mm It is a completely monoblock welded accessory designed to create a wiring reserve at the bottom of the cabinet and to raise the cabinet from its floor. Metal production accessory is supplied in RAL 7035 Light Gray Color. It is a high strength accessory structured from steel material with bending technology. Carrying capacity is 1000 kg.

#### BASE GROUP; OUTDOOR

Product Code	Product Description	Width (w) (mm)	Depth (D) (mm)	Height(H) (mm)	Weight (Net) (kg)	Weight (Gross) (kg)
OT-BAZ6045-A-XX-YY	BASE GROUP; OUTDOOR H=100MM W=600MM D=450MM	600	450	100	5,5	6,5
OT-BAZ6060-A-XX-YY	BASE GROUP; OUTDOOR H=100MM W=600MM D=600MM	600	600	100	6,5	7,6

XX = Colour Code, B1 White RAL 7035, S1 Black RAL 9005, during order please specify the colour choice.  
YY = M1 for pre-assembled, D1 for flat pack.

### 10" SOHO ACCESSORIES

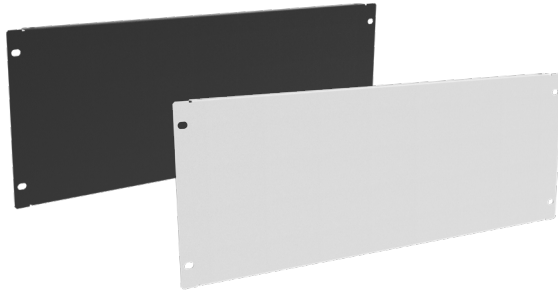


#### 10" Wall Mounted SOHO Accessories

Product Code	Product Description	Height Size in U	Height with mounting rails (W) (mm)	Width (w) (mm)	Depth (D) (mm)	Height (H) (mm)	Weight (Net) (kg)	Weight (Gross) (kg)
AA-RMR01U15-A-XX-YY	1U 10" Fixed Shelf D=150mm	1U	10"	254	150	44	0,4	0,45
AA-PAF10-A-XX-YY	1/2U 10" Cable Management Panel brushed, for patchcord entry opening	1/2U	10"	254	12	22	0,07	0,11
AG-PP01U10C68P-A-XX-YY	1U patch panel empty for 8 port RJ45 keystone jacks	1U	10"	254	12	44	0,27	0,31
AA-PRZ01U10-3-A-PL	1U 10" 3 way Power Stripe Module on/off Switched with cable and plug	1U	10"	254	44	44	0,6	0,7
AA-KPN01U10-A-XX-YY	1U 10" Blank Panel with Screw	1U	10"	254	12	44	0,09	0,13

XX = Colour Code, B1 White RAL 7035, S1 Black RAL 9005, during order please specify the colour choice.  
YY = M1 for pre-assembled, D1 for flat pack.

## TOOLLESS TYPE BLANK PANELS

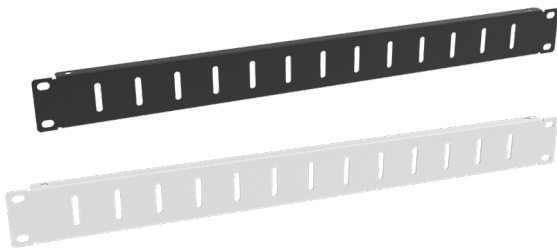


For Empty or Spare U locations in Network and Storage applications, the products could be used for closing and giving a good visual performance to cabinet. In Hot or cold air flow applications, the blanking panels could be used for directing the cold or hot air through. Sizes are various between 1U to 6U in 19" width size. Solid metal toolless model, with special turning clips by hand toolless application can be performed. From Steel Material with 2 bends extra strength given. Supply in RAL 9005 Black and RAL 7035 Light Grey colors.

### TOOLLESS TYPE BLANK PANELS

Product Code	Product Description	Width (w) (mm)	Depth (D) (mm)	Height(H) (mm)	Weight (Net) (kg)	Weight (Gross) (kg)
AA-KPN01U19-A-XX-YY	1U 19" Blank Panel Toolless	482	12	44	0,26	0,3
AA-KPN02U19-A-XX-YY	2U 19" Blank Panel Toolless	482	12	88	0,43	0,51
AA-KPN03U19-A-XX-YY	3U 19" Blank Panel Toolless	482	12	132	0,6	0,67
AA-KPN04U19-A-XX-YY	4U 19" Blank Panel Toolless	482	12	176	0,77	0,91
AA-KPN05U19-A-XX-YY	5U 19" Blank Panel Toolless	482	12	220	0,93	1,08
AA-KPN06U19-A-XX-YY	6U 19" Blank Panel Toolless	482	12	264	1,1	1,29

XX = Colour Code, B1 White RAL 7035, S1 Black RAL 9005, during order please specify the colour choice.  
YY = M1 for pre-assembled, D1 for flat pack.

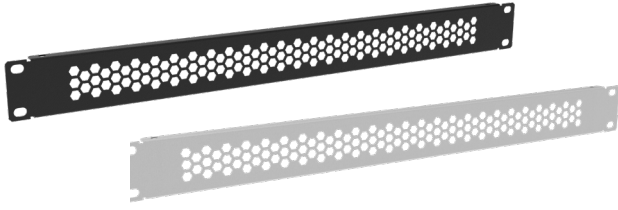


In Network and Storage applications, it is used in cases where cold/hot air passages are allowed in order to correct the appearance by closing the U dimensions where no device is installed, left empty or spare. 19" Closed Type Screw Mounted Closure Panels in sizes from 1U to 6 U are offered as conventional products. Slotted closure panels made of metal with 2 bends are supplied in RAL 9005 Black and RAL 7035 Light Gray Colors.

### BLANK PANELS WITH SLOTH

Product Code	Product Description	Width (w) (mm)	Depth (D) (mm)	Height(H) (mm)	Weight (Net) (kg)	Weight (Gross) (kg)
01U19-A-XX-YY	1U 19" Blank Panels with Sloths	482	12	44	0,26	0,3
AA-SKP02U19-A-XX-YY	2U 19" Blank Panels with Sloths	482	12	88	0,43	0,51
AA-SKP03U19-A-XX-YY	3U 19" Blank Panels with Sloths	482	12	132	0,6	0,67
AA-SKP04U19-A-XX-YY	4U 19" Blank Panels with Sloths	482	12	176	0,77	0,91
AA-SKP05U19-A-XX-YY	5U 19" Blank Panels with Sloths	482	12	220	0,93	1,08
AA-SKP06U19-A-XX-YY	6U 19" Blank Panels with Sloths	482	12	264	1,1	1,29

XX = Colour Code, B1 White RAL 7035, S1 Black RAL 9005, during order please specify the colour choice.  
YY = M1 for pre-assembled, D1 for flat pack.

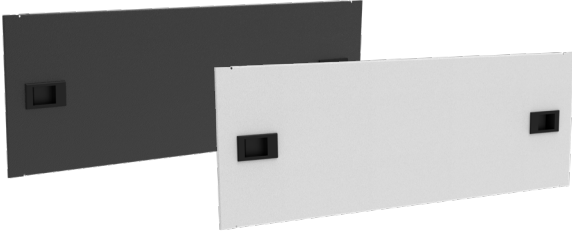


In Network and Storage applications, it is used in cases where cold/hot air passages are allowed in order to correct the decorative appearance by closing the U dimensions where no device is installed, left empty or spare. 19" Closed Type Screw Mounted Closure Panels in sizes from 1U to 6 U are offered as conventional products. Honeycomb perforated discharge closure panels made of metal with 2 bends are supplied in RAL 9005 Black and RAL 7035 Light Gray Colors.

#### HONEYCOMB PERFORATED BLANK PANELS

Product Code	Product Description	Width (w) (mm)	Depth (D) (mm)	Height(H) (mm)	Weight (Net) (kg)	Weight (Gross) (kg)
AA-PKP01U19-A-XX-YY	1U 19" Honeycomb Perforated Blank Panels	482	12	44	0,26	0,3
AA-PKP02U19-A-XX-YY	2U 19" Honeycomb Perforated Blank Panels	482	12	88	0,46	0,51
AA-PKP03U19-A-XX-YY	3U 19" Honeycomb Perforated Blank Panels	482	12	132	0,58	0,67
AA-PKP04U19-A-XX-YY	4U 19" Honeycomb Perforated Blank Panels	482	12	176	0,79	0,91
AA-PKP05U19-A-XX-YY	5U 19" Honeycomb Perforated Blank Panels	482	12	220	0,97	1,08
AA-PKP06U19-A-XX-YY	6U 19" Honeycomb Perforated Blank Panels	482	12	264	1,15	1,29

XX = Colour Code, B1 White RAL 7035, S1 Black RAL 9005, during order please specify the colour choice.  
YY = M1 for pre-assembled, D1 for flat pack.

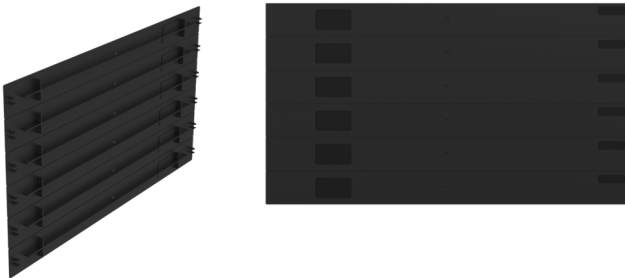


In Network and Storage applications, it is used as a stopper and diverter in cold / hot air passages and to correct the appearance by closing the U dimensions where no device is installed, left empty or spare. 19" Closed Type Tool-Free Removable Closure Panels in sizes from 1U to 6 U are offered as conventional products. Closure panels made of metal with 2 bends are supplied in RAL 9005 Black and RAL 7035 Light Gray Colors.

#### TOOL FREE BLANK PANELS

Product Code	Product Description	Width (w) (mm)	Depth (D) (mm)	Height(H) (mm)	Weight (Net) (kg)	Weight (Gross) (kg)
AA-KPN-TBP-01U19-B-XX-YY	1U 19" Tool Free Blank Panels Sliding Lock	482	12	44	0,28	0,3
AA-KPN-TBP-02U19-B-XX-YY	2U 19" Tool Free Blank Panels Sliding Lock	482	12	88	0,46	0,51
AA-KPN-TBP-03U19-B-XX-YY	3U 19" Tool Free Blank Panels Sliding Lock	482	12	132	0,64	0,67
AA-KPN-TBP-04U19-B-XX-YY	4U 19" Tool Free Blank Panels Sliding Lock	482	12	176	0,81	0,91
AA-KPN-TBP-05U19-B-XX-YY	5U 19" Tool Free Blank Panels Sliding Lock	482	12	220	0,99	1,08
AA-KPN-TBP-06U19-B-XX-YY	6U 19" Tool Free Blank Panels Sliding Lock	482	12	264	1,17	1,29

XX = Colour Code, B1 White RAL 7035, S1 Black RAL 9005, during order please specify the colour choice.  
YY = M1 for pre-assembled, D1 for flat pack.



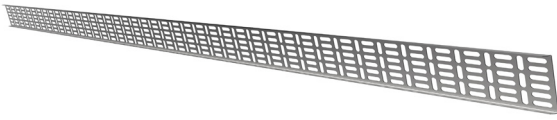
In Network and Storage applications, it is used as a stopper and diverter in cold / hot air passages and to correct the appearance by closing the U dimensions where no device is installed, left empty or spare. 19" Closed Type Tool-Free Removable Closure Panels in sizes from 1U to 6 U are offered as conventional products. Closure panels made of metal with 2 bends are supplied in RAL 9005 Black and RAL 7035 Light Gray Colors.

#### BREAKABLE BLANK PANEL

Product Code	Product Description	Width (w) (mm)	Depth (D) (mm)	Height(H) (mm)	Weight (Net) (kg)	Weight (Gross) (kg)
AA-KPN06U19-PS-XX-YY	6U 19" FLAT TOOL-FREE PLASTIC 1U BREAKABLE BLANK PANEL	482	12	266,7	0,36	0,46

XX = Colour Code, B1 White RAL 7035, S1 Black RAL 9005, during order please specify the colour choice.  
YY = M1 for pre-assembled, D1 for flat pack.

VERTICAL CABLE TRAYS



The Vertical Cable Trays are for inserting cable bundles to cabinet and to carry them into the final connection point, W=100mm sized cable trays are vertically used aligning with the cable entry openings on cabinet. The cables should run on the cable trays where the cables tire-up to the matching slot holes on the cable tray. From Steel Material with 2 bends, Dx51D.

VERTICAL CABLE TRAYS

Product Code	Product Description	Width (w) (mm)	Depth (D) (mm)	Height(H) (mm)	Weight (Net) (kg)	Weight (Gross) (kg)
AA-KKN12U10-A-GV	12U CABLE TRAY DX51D+ZN275 GALVANIZED SHEET METAL W=100MM	100	10	526	0,37	0,41
AA-KKN16U10-A-GV	16U CABLE TRAY DX51D+ZN275 GALVANIZED SHEET METAL W=100MM	100	10	704	0,42	0,48
AA-KKN20U10-A-GV	20U CABLE TRAY DX51D+ZN275 GALVANIZED SHEET METAL W=100MM	100	10	882	0,53	0,60
AA-KKN22U10-A-GV	22U CABLE TRAY DX51D+ZN275 GALVANIZED SHEET METAL W=100MM	100	10	971	0,59	0,68
AA-KKN26U10-A-GV	26U CABLE TRAY DX51D+ZN275 GALVANIZED SHEET METAL W=100MM	100	10	1149	0,64	0,71
AA-KKN32U10-A-GV	32U CABLE TRAY DX51D+ZN275 GALVANIZED SHEET METAL W=100MM	100	10	1415,5	0,80	0,88
AA-KKN36U10-A-GV	36U CABLE TRAY DX51D+ZN275 GALVANIZED SHEET METAL W=100MM	100	10	1593,3	0,90	1,01
AA-KKN42U10-A-GV	42U CABLE TRAY DX51D+ZN275 GALVANIZED SHEET METAL W=100MM	100	10	1860	1,05	1,10
AA-KKN47U10-A-GV	47U CABLE TRAY DX51D+ZN275 GALVANIZED SHEET METAL W=100MM	100	10	2082	1,2	1,19

XX = Colour Code, B1 White RAL 7035, S1 Black RAL 9005, during order please specify the colour choice.  
YY = M1 for pre-assembled, D1 for flat pack.



Vertical Cable managers, for use of carrying the cables into the final connection point. Cable Manager sizes are W=95mm D=82mm. maximum openings for cable management are available due to wire mesh structure. Designed for keeping all kind of patch cables, data cables and electrical cables due to large internal volume. Longitudinally assemble to 19” mounting rails and cable holes are available.

VERTICAL CABLE MANAGEMENT PANELS FREE STANDING TYPE

Product Code	Product Description	Width (w) (mm)	Depth (D) (mm)	Height(H) (mm)	Weight (Net) (kg)	Weight (Gross) (kg)
VG-ORS22U-A-XX-YY	22U Wire Mesh Cable Management panel set left/right	97	97	996	3,55	3,7
VG-ORS26U-A-XX-YY	26U Wire Mesh Cable Management panel set left/right	97	97	1175	4,1	4,4
VG-ORS32U-A-XX-YY	32U Wire Mesh Cable Management panel set left/right	97	97	1440	4,9	5,3
VG-ORS36U-A-XX-YY	36U Wire Mesh Cable Management panel set left/right	97	97	1620	5,4	5,8
VG-ORS42U-A-XX-YY	42U Wire Mesh Cable Management panel set left/right	97	97	1885	6,2	6,6
VG-ORS47U-A-XX-YY	47U Wire Mesh Cable Management panel set left/right	97	97	2110	7,5	8
SR-ORS22U-A-XX-YY	22U Wire Mesh Cable Management panel set left/right	97	97	996	3,55	3,7
SR-ORS26U-A-XX-YY	26U Wire Mesh Cable Management panel set left/right	97	97	1175	4,1	4,4
SR-ORS32U-A-XX-YY	32U Wire Mesh Cable Management panel set left/right	97	97	1440	4,9	5,3
SR-ORS36U-A-XX-YY	36U Wire Mesh Cable Management panel set left/right	97	97	1620	5,4	5,8
SR-ORS42U-A-XX-YY	42U Wire Mesh Cable Management panel set left/right	97	97	1885	6,2	6,6
SR-ORS47U-A-XX-YY	47U Wire Mesh Cable Management panel set left/right	97	97	2110	7,5	8

XX = Colour Code, B1 White RAL 7035, S1 Black RAL 9005, during order please specify the colour choice.  
YY = M1 for pre-assembled, D1 for flat pack.



Vertical Cable Arrangement Class, W=106mm D=109mm finger type cable trays for the management and transfer of cables taken into the cabinet. Maximum cable passage openings are available to allow dense cabling. Thanks to its large internal volume, it is designed to store all kinds of patch cables, data cables and electrical cables. Along the 19" device uprights, it is connected to the sides of the device uprights and cable pass-through openings are available.

**VERTICAL CABLE ORGANIZER PANELS VERTICAL TYPE**

Product Code	Product Description	Width (w) (mm)	Depth (D) (mm)	Height(H) (mm)	Weight (Net) (kg)	Weight (Gross) (kg)
VG-FORS22U-A-XX-YY	22U VERTICAL FINGER ORGANIZER SET RIGHT/LEFT	106	109	982	4,2	4,6
VG-FORS26U-A-XX-YY	26U VERTICAL FINGER ORGANIZER SET RIGHT/LEFT	106	109	1161	5	5,4
VG-FORS32U-A-XX-YY	32U VERTICAL FINGER ORGANIZER SET RIGHT/LEFT	106	109	1426	6	6,4
VG-FORS36U-A-XX-YY	36U VERTICAL FINGER ORGANIZER SET RIGHT/LEFT	106	109	1606	6,9	7,3
VG-FORS42U-A-XX-YY	42U VERTICAL FINGER ORGANIZER SET RIGHT/LEFT	106	109	1871	8	8,4
VG-FORS47U-A-XX-YY	47U VERTICAL FINGER ORGANIZER SET RIGHT/LEFT	106	109	2096	9	9,4
SR-FORS22U-A-XX-YY	22U VERTICAL FINGER ORGANIZER SET RIGHT/LEFT	106	109	982	4,2	4,6
SR-FORS26U-A-XX-YY	26U VERTICAL FINGER ORGANIZER SET RIGHT/LEFT	106	109	1161	5	5,4
SR-FORS32U-A-XX-YY	32U VERTICAL FINGER ORGANIZER SET RIGHT/LEFT	106	109	1426	6	6,4
SR-FORS36U-A-XX-YY	36U VERTICAL FINGER ORGANIZER SET RIGHT/LEFT	106	109	1606	6,9	7,3
SR-FORS42U-A-XX-YY	42U VERTICAL FINGER ORGANIZER SET RIGHT/LEFT	106	109	1871	8	8,4
SR-FORS47U-A-XX-YY	47U VERTICAL FINGER ORGANIZER SET RIGHT/LEFT	106	109	2096	9	9,4

XX = Colour Code, B1 White RAL 7035, S1 Black RAL 9005, during order please specify the colour choice.  
YY = M1 for pre-assembled, D1 for flat pack.



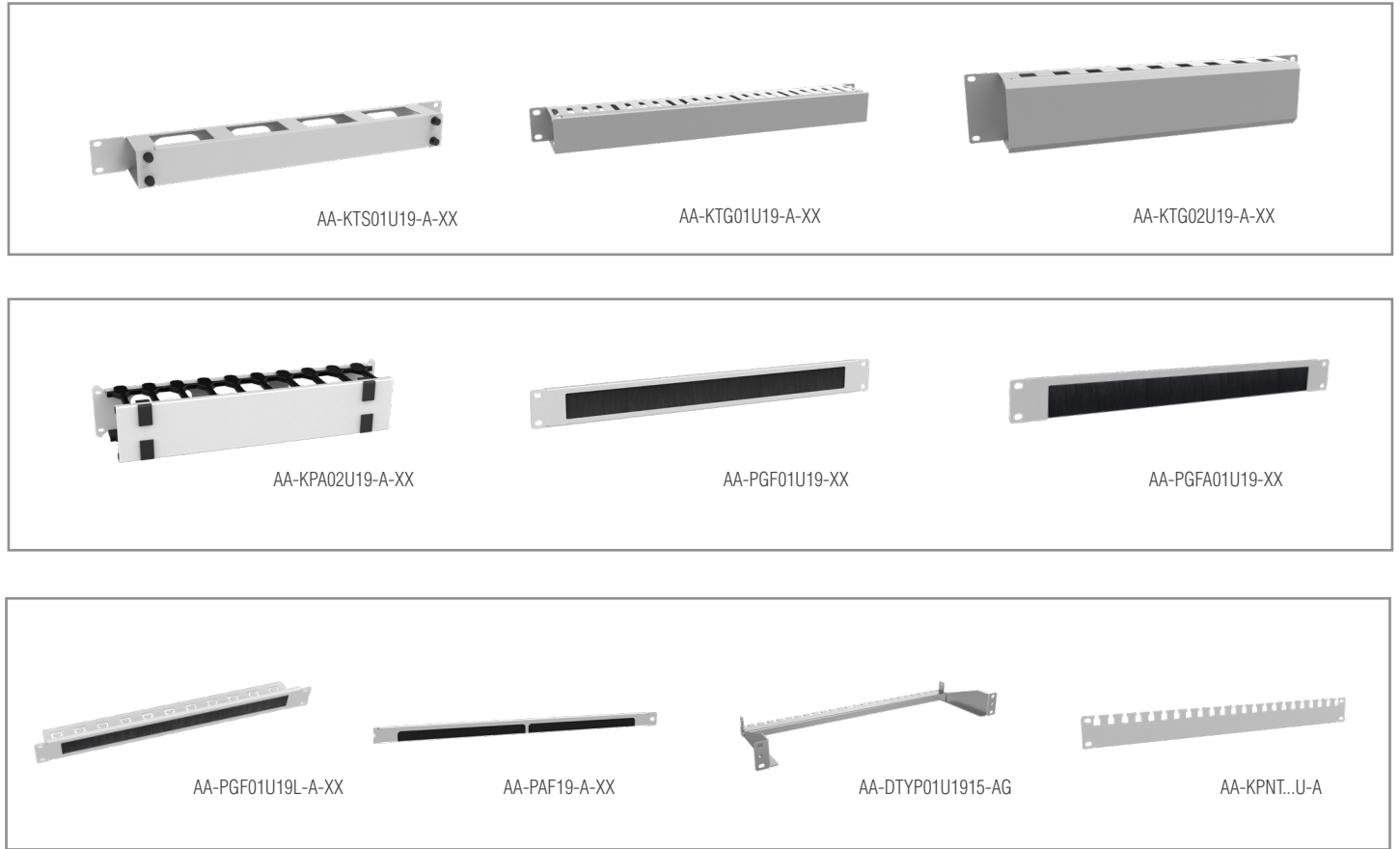
Vertical Cable Arrangement Class, W=95mm D=82mm cable trays for the management and transfer of cables taken into the cabinet. Maximum cable passage openings are available to allow dense cabling. Thanks to its large internal volume, it is designed to store all kinds of patch cables, data cables and electrical cables. Along the 19" device uprights, it is connected to the sides of the device uprights and cable pass-through openings are available.

**VERTICAL CABLE ORGANIZER PANELS VERTICAL TYPE**

Product Code	Product Description	Width (w) (mm)	Depth (D) (mm)	Height(H) (mm)	Weight (Net) (kg)	Weight (Gross) (kg)
VG-ORS22U-A-XX-YY	22U VERTICAL ORGANIZER SET RIGHT/LEFT	97	97	996	3,55	3,7
VG-ORS26U-A-XX-YY	26U VERTICAL ORGANIZER SET RIGHT/LEFT	97	97	1175	4,1	4,4
VG-ORS32U-A-XX-YY	32U VERTICAL ORGANIZER SET RIGHT/LEFT	97	97	1440	4,9	5,3
VG-ORS36U-A-XX-YY	36U VERTICAL ORGANIZER SET RIGHT/LEFT	97	97	1620	5,4	5,8
VG-ORS42U-A-XX-YY	42U VERTICAL ORGANIZER SET RIGHT/LEFT	97	97	1885	6,2	6,6
VG-ORS47U-A-XX-YY	47U VERTICAL ORGANIZER SET RIGHT/LEFT	97	97	2110	7,5	8

XX = Colour Code, B1 White RAL 7035, S1 Black RAL 9005, during order please specify the colour choice.  
YY = M1 for pre-assembled, D1 for flat pack.

## HORIZONTAL CABLE ORGANIZATION ACCESSORIES

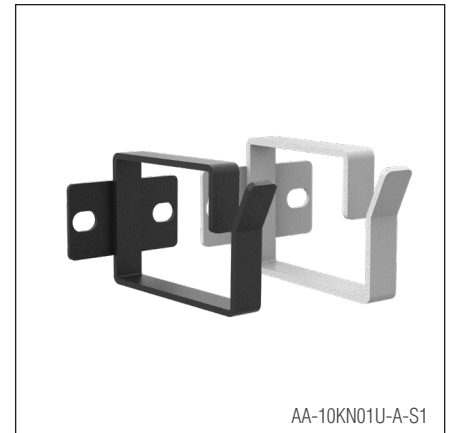
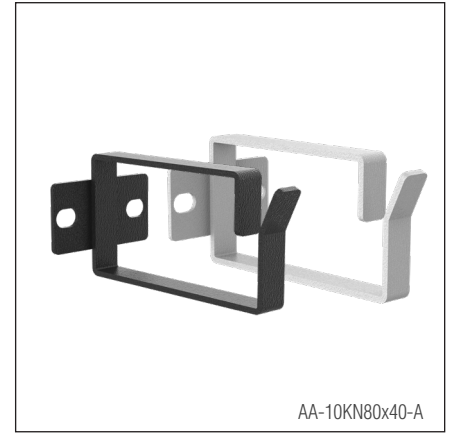
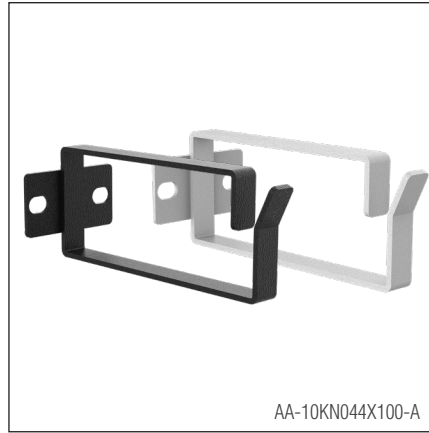


Horizontal Cable Arrangement Class, various accessories for the management and transfer of cables taken into the cabin. 1/2U, 1U, 2U brush, hook, cover types are available. Supplied in RAL 9005 Black and RAL 7035 Light Gray Colors.

HORIZONTAL CABLE ORGANIZATION ACCESSORIES						
Product Code	Product Description	Width (w) (mm)	Depth (D) (mm)	Height (h) (mm)	Weight (Net) (kg)	Weight (Gross) (kg)
AA-KTS01U19-A-XX-YY	1U 19" CABLE ORGANIZATION PANEL, DUCT TYPE WITH REMOVABLE FRONT COVER	482	75	44	0,51	0,55
AA-KTG01U19-A-XX-YY	1U 19" CABLE ORGANIZER PANEL, DUCT TYPE WITH REMOVABLE FRONT COVER WITH CRADLE	482	72	44	0,68	0,72
AA-KTG02U19-A-XX-YY	2U 19" CABLE ORGANIZER PANEL, DUCT TYPE CRADLE WITH REMOVABLE FRONT COVER	482	72	88	1,35	1,47
AA-KPA02U19-A-XX-YY	2U 19" CABLE ORGANIZER PANEL WITH INTEGRATED DUCT TYPE PLASTIC ORGANIZER WITH 2U OPENABLE FRONT COVER	482	165	88	1,54	1,75
AA-PGF01U19-A-XX-YY	1U 19" CABLE ORGANIZATION PANEL PATCHCORD ENTRANCE HALL BRUSH TYPE	482	12	44	0,25	0,29
AA-PGFA01U19-A-XX-YY	1U 19" CABLE ORGANIZATION PANEL PATCHCORD ENTRANCE HALL BRUSH ONE SIDE OPEN TYPE	482	12	44	0,25	0,29
AA-PGF01U19L-A-XX-YY	1U 19" CABLE ORGANIZER PANEL BRUSH TYPE, L TWIST, ORGANIZER WITH REAR PATCHCORD HOLDER	482	112	44	0,58	0,76
AA-PAF19-A-XX-YY	1/2U 19" CABLE ARRANGEMENT PANEL PATCHCORD ENTRANCE HALL, OPEN EDGES BRUSHED TYPE	482	12	22	0,45	0,64
AA-DTYP01U1915-AG-XX-YY	1U 19" D=150MM CABLE CREEP-UP PART	482	150	44	0,4	0,56
AA-KPNT01U-A-XX-YY	1U 19" CABLE TIRE-UP PANEL	482	-	44	0,3	0,46

XX = Colour Code, B1 White RAL 7035, S1 Black RAL 9005, during order please specify the colour choice.  
YY = M1 for pre-assembled, D1 for flat pack.

## ORGANIZER WITH HOOKS



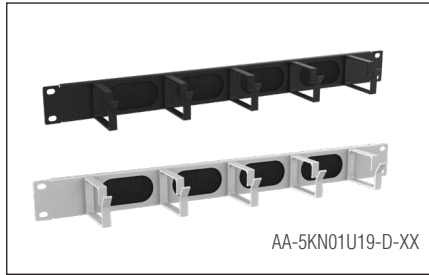
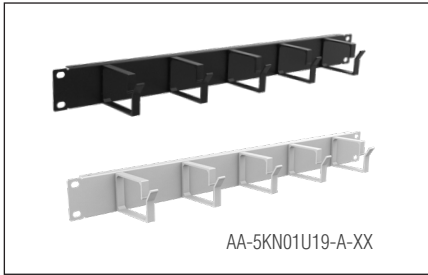
Universal Cable Arrangement hooks compatible with all types of cabinets, They are various accessories for the management and transfer of cables taken into the cabinet. Different size options are available. Supplied in RAL 9005 Black and RAL 7035 Light Gray Colors. Available as a 10 piece accessory set.

### ORGANIZERS WITH HOOKS

Product Code	Product Description	Width (w) (mm)	Depth (D) (mm)	Height (h) (mm)	Weight (Net) (kg)	Weight (Gross) (kg)
AA-10KN01U70X150-A-XX-YY	1U 70X150MM METAL CABLE ORGANIZER HOOK 1 SET 10 PCS	44	70	150	0,76	0,86
AA-10KN044X100-A-XX-YY	1U 44X100MM METAL CABLE ORGANIZER HOOK 1 SET 10 PCS	44	44	100	0,55	0,65
AA-10KN80x40-A-XX-YY	1U 80X40MM METAL CABLE ORGANIZER HOOK 1 SET 10 PCS	44	80	40	0,65	0,75
AA-10KN80x80-A-XX-YY	1U 80X80MM METAL CABLE ORGANIZER HOOK 1 SET 10 PCS	44	80	80	0,77	0,87
AA-10KN80x100-A-XX-YY	1U 80X100MM METAL CABLE ORGANIZER HOOK 1 SET 10 PCS	44	80	100	1,07	1,17
AA-KN01U44X60-A-XX-YY	1U 44X60MM METAL CABLE ORGANIZER HOOK 1 SET 10 PCS	44	44	60	0,59	0,69

XX = Colour Code, B1 White RAL 7035, S1 Black RAL 9005, during order please specify the colour choice.  
YY = M1 for pre-assembled, D1 for flat pack.

## HOOKED ORGANIZERS

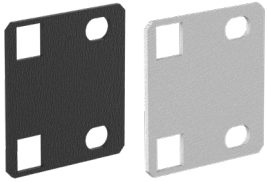


Horizontal Cable Arrangement Panels are various accessories for the management and transfer of cables taken into the cabin. 1U, 2U hooked, hooked and brushed types are available. Supplied in RAL 9005 Black and RAL 7035 Light Gray Colors.

HORIZONTAL CABLE ORGANIZERS WITH HOOKS						
Product Code	Product Description	Width (w) (mm)	Depth (D) (mm)	Height(H) (mm)	Weight (Net) (kg)	Weight (Gross) (kg)
AA-5KN01U19-A-XX-YY	1U 19 INCH A TYPE 5 ALM 44X60 HOOKED ORGANIZER	482	60	44	0,32	0,35
AA-5KN01U19-D-XX-YY	1U 19 INCH D TYPE 5 ALM 44X60 HOOKED ORGANIZER (BRUSH CABLE PASSAGE BETWEEN HOOKS)	482	60	44	0,4	0,43
AA-5KN02U19-A-XX-YY	2U 19 INCH A TYPE 5 ALM 88X60 HOOKED ORGANIZER	482	60	88	1,35	1,47

XX = Colour Code, B1 White RAL 7035, S1 Black RAL 9005, during order please specify the colour choice.  
YY = M1 for pre-assembled, D1 for flat pack.

## ADAPTORS

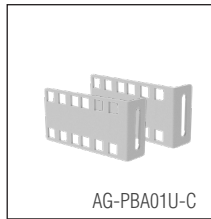
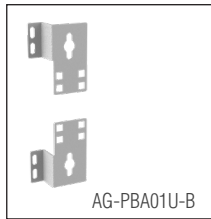
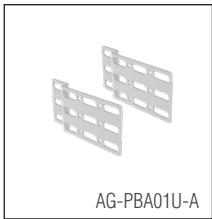


They are apparatus for converting 21" device mounting area to 19". You can contact our sales department for different size options.

ADAPTORS						
Product Code	Product Description	Width (w) (mm)	Depth (D) (mm)	Height(H) (mm)	Weight (Net) (kg)	Weight (Gross) (kg)
AA-ADAPT2119-A-XX-YY	21 INCH TO 19 INCH CONVERSION ADAPTER (1SET INCLUDES 2 SETS OF EARS AND 4 SETS OF CAGE NUTS)	44	44	1,5	-	-

XX = Colour Code, B1 White RAL 7035, S1 Black RAL 9005, during order please specify the colour choice.  
YY = M1 for pre-assembled, D1 for flat pack.

## PDU CONNECTORS

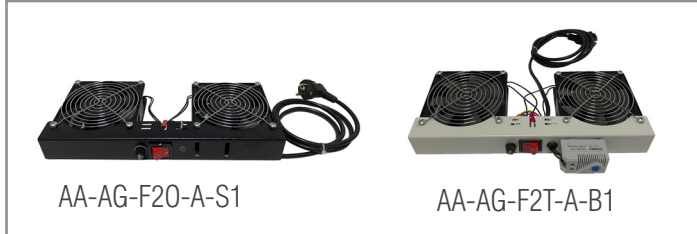
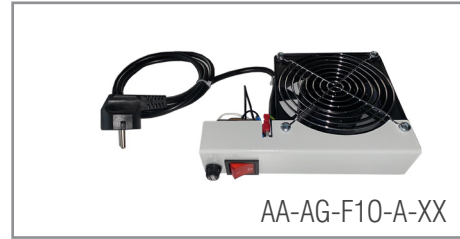


Multi-purpose mounting brackets compatible with all cabinet types, made of metal material, Vertical PDU etc.

PDU CONNECTORS						
Product Code	Product Description	Width (w) (mm)	Depth (D) (mm)	Height(H) (mm)	Weight (Net) (kg)	Weight (Gross) (kg)
AG-PBA01U-A-XX-YY	01U PDU CONNECTION LUG (1.5MM) GLV	44	98,5	10	0,06	0,09
AA-PBA01U-B-XX-YY	01U PDU CONNECTION LUG (1.5MM) GLV	68,5	30	88	0,13	0,43
AG-PBA01U-C-XX-YY	01U PDU CONNECTION LUG (1.5MM) GLV	50	100	23	0,12	0,32

XX = Colour Code, B1 White RAL 7035, S1 Black RAL 9005, during order please specify the colour choice.  
YY = M1 for pre-assembled, D1 for flat pack.

## UNIVERSAL FAN MODULES



They are Fan Module units compatible with all types of cabinets and can be used in all U heights in all types of cabinets. They are wired units with on/off, on/off and thermostat integrated in ready plug and play style. Fan capacity is 2,3-3 m<sup>3</sup> /min air flow rate. Fan Technical Specifications 26/23 W, 220/240 VAC, 50/60 Hz, 0.14/0.13 A, 2700/3240 rpm 41-46 dB noise level, Fan life: 50,000 hours (40°C)- Acceptable operating temperature -10°C ~ +70°C.

### UNIVERSAL FAN MODULES

Product Code	Product Description	Width (w) (mm)	Depth (d) (mm)	Height(h) (mm)	Weight (Net) (kg)	Weight (Gross) (kg)
AA-AG-F1-A-XX-YY	1PC FAN MODULE WITH 1.5M BLACK PLUG CABLE	120	120	38	0,6	0,7
AA-AG-F1T-A-XX-YY	1PC FAN MODULE WITH THERMOSTAT ON/OFF SWITCH 1.5M BLACK PLUG CABLE	120	120	38	0,7	0,8
AA-AG-F10-A-XX-YY	1PC FAN MODULE WITH ON/OFF SWITCH 1.5M BLACK PLUG CABLE	190	140	39	0,7	0,8
AA-AG-F20-A-XX-YY	2-PIECE FAN MODULE WITH ON/OFF SWITCH 1.5M BLACK PLUG CABLE	320	140	39	1,5	1,6
AA-AG-F2T-A-XX-YY	2-PIECE FAN MODULE WITH THERMOSTAT ON/OFF SWITCH 1.5M BLACK PLUG CABLE	320	172	39	1,6	1,7

XX = Colour Code, B1 White RAL 7035, S1 Black RAL 9005, during order please specify the colour choice.  
YY = M1 for pre-assembled, D1 for flat pack.

## FIELD PANELS 1+1 FAN MODULES



Field Panels are Fan Module units. They are wired units with on/off and thermoshot cable integrated in plug and play style. Fan capacity is 2,3-3 m<sup>3</sup> /min air flow rate. Fan Technical Specifications 26/23 W, 220/240 VAC, 50/60 Hz, 0.14/0.13 A, 2700/3240 rpm 41-46 dB noise level, Fan life: 50,000 hours (40°C)- Acceptable operating temperature -10°C ~ +70°C.

### FIED PANELS 1+1 FAN MODULES

Product Code	Product Description	Width (w) (mm)	Depth (d) (mm)	Height(h) (mm)	Weight (Net) (kg)	Weight (Gross) (kg)
OS-F11T-XX-YY	FIELD PANELS 1+1 FAN MODULES	175	200	45	0,9	0,95

XX = Colour Code, B1 White RAL 7035, S1 Black RAL 9005, during order please specify the colour choice.  
YY = M1 for pre-assembled, D1 for flat pack.

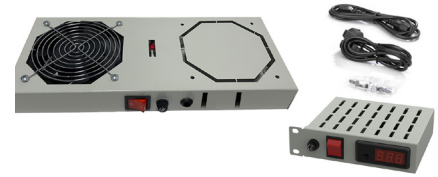
**WALL MOUNTED FAN MODULES**



AA-AN-F10-A-XX



AA-AN-F1T-A-B1



AA-AN-F1DT-A-XX



AA-AN-F20-A-XX



AA-AN-F2T-A-B1



AA-AN-F2DT-A-XX

They are Fan Module units special for wall mounted cabinets and can be used in all U heights. They are wired units with on/off, on/off and thermostat with 0-35°C operating range integrated in plug and play style. Fan capacity is 2,3-3 m<sup>3</sup>/min air flow rate. Fan Technical Specifications 26/23 W, 220/240 VAC, 50/60 Hz, 0.14/0.13 A, 2700/3240 rpm 41-46 dB noise level, Fan life: 50,000 hours (40°C)- Acceptable operating temperature -10°C ~ +70°C.

**WALL MOUNTED FAN MODULES**

Product Code	Product Description	Width (w) (mm)	Depth (d) (mm)	Height(H) (mm)	Weight (Net) (kg)	Weight (Gross) (kg)
AA-AN-FKP2F-A-XX-YY	2 PCS FAN DISCHARGE SHUT-OFF SHEET	365	216	1	0,6	0,7
AA-AN-F10-A-XX-YY	1PCS FAN MODULE WITH ON/OFF SWITCH AND 1.5M BLACK PLUG CABLE	346	175	50	1,53	1,76
AA-AN-F1T-A-XX-YY	1 PCS FAN MODULE WITH THERMOSTAT ON/OFF SWITCH WITH 1.5M BLACK PLUG CABLE	346	175	50	2,83	3,13
AA-AN-F20-A-XX-YY	2 PCS FAN MODULE WITH ON/OFF SWITCH AND 1.5M BLACK PLUG CABLE	346	175	50	1,97	2,2
AA-AN-F2T-A-XX-YY	2 PCS FAN MODULE WITH THERMOSTAT AND ON/OFF SWITCH WITH 1.5M BLACK PLUG CABLE	346	175	50	3,9	4,15
AA-AN-F1DT-A-XX-YY	1 PCS DIGITAL THERMOSTAT FAN MODULE WITH ON/OFF SWITCH 1.5M BLACK PLUG CABLE	415	431	44	3,08	3,33
AA-AN-F2DT-A-XX-YY	2 PCS DIGITAL THERMOSTAT FAN MODULE WITH ON/OFF SWITCH 1.5M BLACK PLUG CABLE	415	431	44	3,08	3,33

XX = Colour Code, B1 White RAL 7035, S1 Black RAL 9005, during order please specify the colour choice.  
YY = M1 for pre-assembled, D1 for flat pack.

## FREE STANDING FAN MODULES



AA-VG-F20-A-XX

AA-VG-F2T-A-XX

AA-VG-F2DT-A-XX



AA-VG-F40-A-S1

AA-VG-F4T-A-S1

AA-VG-F4DT-A-S1

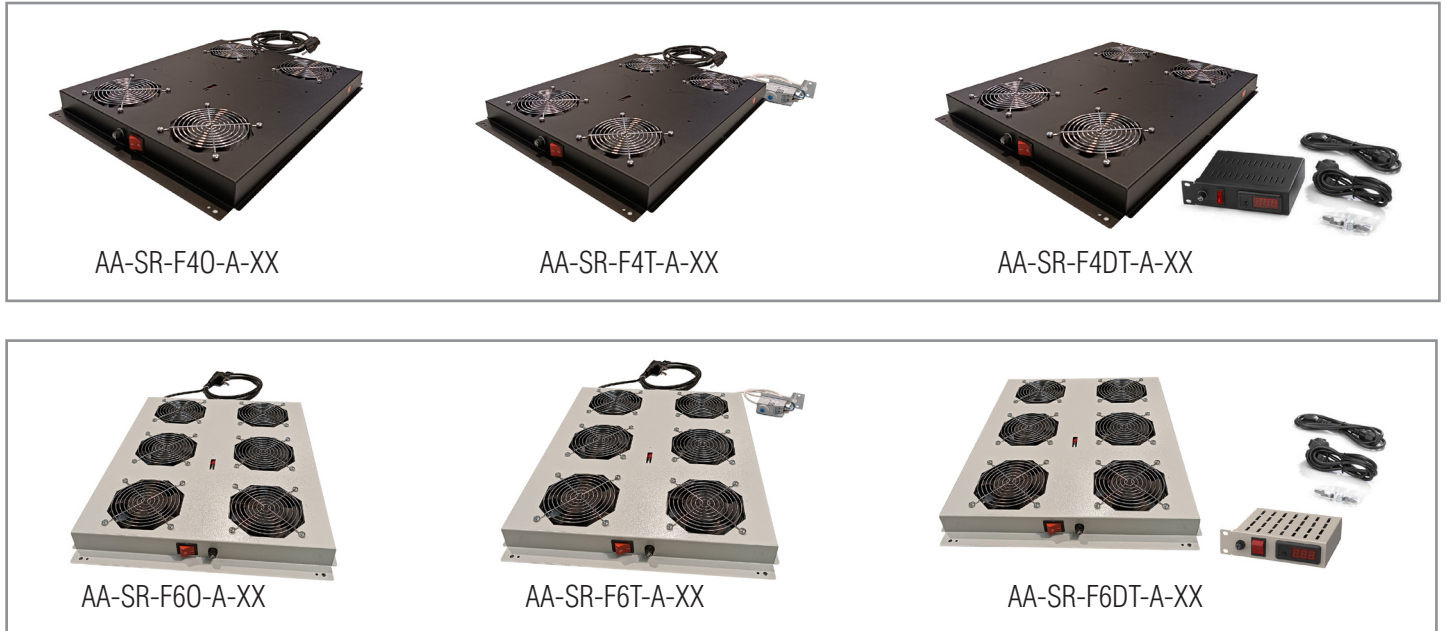
They are Fan Module units special for freestanding type cabinets and can be used in all U heights. On/off, on/off and thermostat wired units with 0-35°C operating range integrated in ready plug and play style. Fan capacity is 2,3-3 m<sup>3</sup>/min air flow rate. Fan Technical Specifications 26/23 W, 220/240 VAC, 50/60 Hz, 0.14/0.13 A, 2700/3240 rpm 41-46 dB noise level, Fan life: 50,000 hours (40°C)- Acceptable operating temperature -10°C ~ +70°C.

### FREE STANDING FAN MODULES

Product Code	Product Description	Width (w) (mm)	Depth (D) (mm)	Height(h) (mm)	Weight (Net) (kg)	Weight (Gross) (kg)
AA-VG-FKP4FS1-A-XX-YY	4-PIECE FAN DISCHARGE COVER SHEET	380	444	1	1,3	1,4
AA-VG-F20-A-XX-YY	2-PIECE FAN MODULE WITH ON/OFF SWITCH AND 3M BLACK PLUG CABLE	415	431	44	2,83	3,13
AA-VG-F2T-A-XX-YY	2-PIECE FAN MODULE WITH THERMOSTAT ON/OFF SWITCH 3M BLACK PLUG CABLE	415	431	44	3	3,3
AA-VG-F40-A-XX-YY	4-PIECE FAN MODULE WITH ON/OFF SWITCH AND 3M BLACK PLUG CABLE	415	431	44	3,9	4,15
AA-VG-F4T-A-XX-YY	4 FAN MODULE WITH THERMOSTAT FAN MODE ON/OFF SWITCH WITH 3M BLACK PLUG WIRED	415	431	44	4,1	4,35
AA-VG-F2DT-A-XX-YY	2-PIECE DIGITAL THERMOSTAT FAN MODULE WITH ON/OFF SWITCH 3M BLACK PLUG CABLE	415	431	44	3,5	4,2
AA-VG-F4DT-A-XX-YY	4-PIECE DIGITAL THERMOSTAT FAN MODULE WITH ON/OFF SWITCH 3M BLACK PLUG CABLE	415	431	44	3,9	4,6

XX = Colour Code, B1 White RAL 7035, S1 Black RAL 9005, during order please specify the colour choice.  
YY = M1 for pre-assembled, D1 for flat pack.

SERVER SERIES FAN MODULES

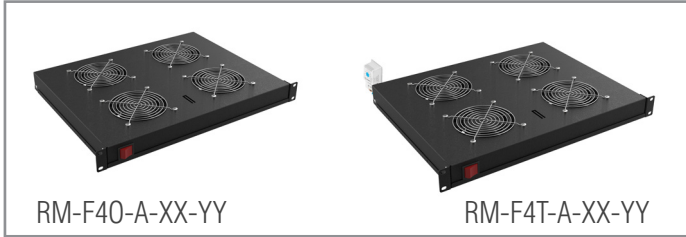
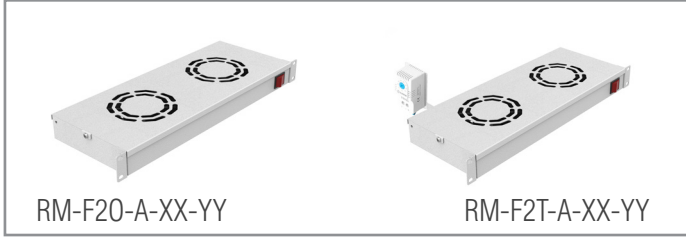


They are Fan Module units special for Server Series cabinets and can be used in all U heights. They are on/off, on/off and thermostat wired units with 0-35°C operating range integrated in plug and play style. Fan capacity is 2,3-3 m3 /min air flow rate. Fan Technical Specifications 26/23 W, 220/240 VAC, 50/60 Hz, 0.14/0.13 A, 2700/3240 rpm 41-46 dB noise level, Fan life: 50,000 hours (40°C)- Acceptable operating temperature -10°C ~ +70°C.

SERVER SERIES FAN MODULES						
Product Code	Product Description	Width (w) (mm)	Depth (d) (mm)	Height(h) (mm)	Weight (Net) (kg)	Weight (Gross) (kg)
AA-SR-FKP6F-A-XX-YY	6 PCS FAN DISCHARGE COVER SHEET	380	444	1	1,3	1,4
AA-SR-F40-A-XX-YY	4 PCS FAN MODULE WITH ON/OFF SWITCH AND 3M BLACK PLUG CABLE	415	431	44	3	3,3
AA-SR-F4T-A-XX-YY	4 PCS FAN MODULE WITH THERMOSTAT FAN MODE ON/OFF SWICH WITH 3M BLACK PLUG WIRED	415	431	44	2,83	3,13
AA-SR-F4DT-A-XX-YY	4 PCS DIGITAL THERMOSTAT FAN MODULE WITH ON/OFF SWITCH 3M BLACK PLUG CABLE	415	431	44	3,5	4,2
AA-SR-F60-A-XX-YY	6 PCS FAN MODULE WITH ON/OFF SWITCH AND 3M BLACK PLUG CABLE	415	431	44	4,1	4,35
AA-SR-F6T-A-XX-YY	6 PCS THERMOSTAT FAN MODULE WITH ON/OFF SWITCH 3M BLACK PLUG CABLE	415	431	44	3,9	4,15
AA-SR-F6DT-A-XX-YY	6 PCS DIGITAL THERMOSTAT FAN MODULE WITH ON/OFF SWITCH 3M BLACK PLUG CABLE	415	431	44	3,9	4,6

XX = Colour Code, B1 White RAL 7035, S1 Black RAL 9005, during order please specify the colour choice.  
YY = M1 for pre-assembled, D1 for flat pack.

## RACK MOUNT FAN MODULES



Rack mount model can be used in all types of cabinets at all U heights. Fan Module units. They are wired units with on/off, on/off and thermostat integrated in plug and play style. Fan capacity is 2,3-3 m<sup>3</sup>/min air flow rate. Fan Technical Specifications 26/23 W, 220/240 VAC, 50/60 Hz, 0.14/0.13 A, 2700/3240 rpm 41-46 dB noise level, Fan life: 50,000 hours (40°C)- Acceptable operating temperature -10°C ~ +70°C.


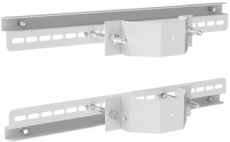
### RACK MOUNT FAN MODULES

Product Code	Product Description	Width (w) (mm)	Depth (d) (mm)	Height(h) (mm)	Weight (Net) (kg)	Weight (Gross) (kg)
RM-F20-A-XX-YY	2 PCS FAN MODULE ON/OFF SWITCH RACK MOUNT 19"	482	150	44	2,60	2,95
RM-F2T-A-XX-YY	2 PCS FAN MODULE THERMOSTAT RACK MOUNT 19"	482	150	44	2,80	3,15
RM-F40-A-XX-YY	4 PCS FAN MODULE ON/OFF SWITCH RACK MOUNT 19"	482	300	44	4,95	5,30
RM-F4T-A-XX-YY	4 PCS FAN MODULE THERMOSTAT RACK MOUNT 19"	482	300	44	5,15	5,50

XX = Colour Code, B1 White RAL 7035, S1 Black RAL 9005, during order please specify the colour choice.  
YY = M1 for pre-assembled, D1 for flat pack.

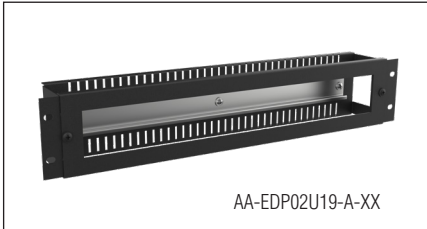
## OUTDOOR POLE BRACKET

### OUTDOOR POLE BRACKET

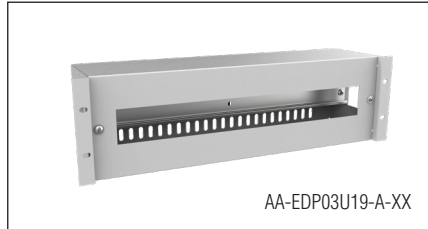
Product Code	Product Description	Product Image
AA-OU-PL-150-8-KIT-B2-HD-XX-YY	Heavy Duty Direct Mount Kit *(You can contact our sales team for different size options)	
AA-OU-PL-150-8-KIT-B2-EC-XX-YY	Clamp Type Pole Mounting Kit *(You can contact our sales team for different size options)	

XX = Colour Code, B1 White RAL 7035, S1 Black RAL 9005, during order please specify the colour choice.  
YY = M1 for pre-assembled, D1 for flat pack.

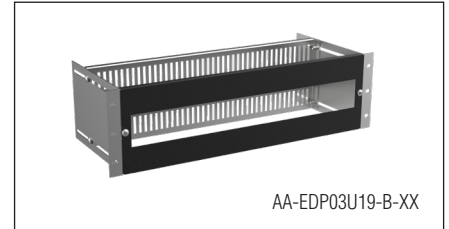
## ELECTRICITY DISTRIBUTION MODULES



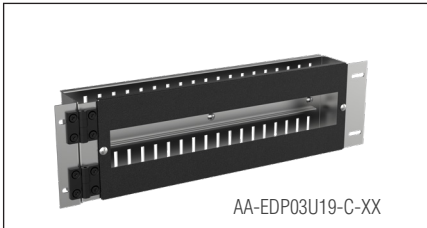
AA-EDP02U19-A-XX



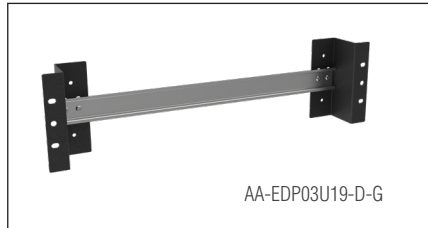
AA-EDP03U19-A-XX



AA-EDP03U19-B-XX



AA-EDP03U19-C-XX



AA-EDP03U19-D-G



AA-EDP2420-A-XX



AA-EDP4720-A-XX

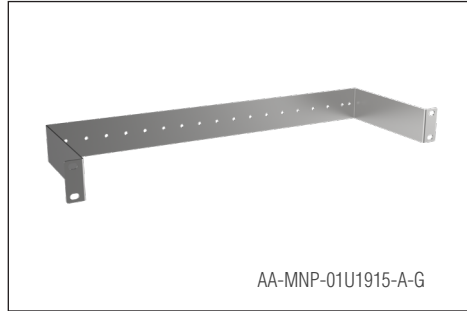
Electrical distribution module; It is a diversified accessory compatible with all 19 cabinets and field panels designed for electrical distribution operations in the cabinet with its metal material, protected with cover / unprotected without cover.

### ELECTRICITY DISTRIBUTION MODULES

Product Code	Product Description	Width (w) (mm)	Depth (D) (mm)	Height(H) (mm)	Weight (Net) (kg)	Weight (Gross) (kg)
AA-EDP02U19-A-XX-YY	2U 19 INCH ELECTRICAL DISTRIBUTION PANEL 22 MODULE CAPACITY	482	70	88	1	1,1
AA-EDP03U19-A-XX-YY	3U 19 INCH ELECTRICAL DISTRIBUTION PANEL WITH 18 MODULE CAPACITY	482	123	133	2,3	2,4
AA-EDP03U19-B-XX-YY	3U 19 INCH MOUNTING DEPTH ADJUSTABLE, MOVABLE ELECTRICAL DISTRIBUTION PANEL 23 MODULE CAPACITY	482	133	133	1,95	2,05
AA-EDP03U19-C-XX-YY	3U 19 INCH HINGED MOVABLE ELECTRICAL DISTRIBUTION PANEL 20 MODULE CAPACITY	482	66	133	1,7	1,8
AA-EDP03U19-D-G-XX-YY	3U 19 INCH OPEN SYSTEM ELECTRICITY DISTRIBUTION PANEL WITH 24 MODULE CAPACITY	482	54,5	126	0,5	0,6
AA-EDP2420-A-XX-YY	W=240 H=185 D=61MM PANEL TYPE ELECTRICAL DISTRIBUTION PANEL 11 MODULE CAPACITY (1AD 200MM OTM RAIL)	240	61	185	0,75	0,8
AA-EDP4720-A-XX-YY	W=470 H=203 D=55MM PANEL TYPE ELECTRICAL DISTRIBUTION PANEL 21 MODULE CAPACITY (1AD 380MM AUTM RAIL)	470	55	203	1,8	1,9

XX = Colour Code, B1 White RAL 7035, S1 Black RAL 9005, during order please specify the colour choice.  
YY = M1 for pre-assembled, D1 for flat pack.

## MOUNTING PANELS

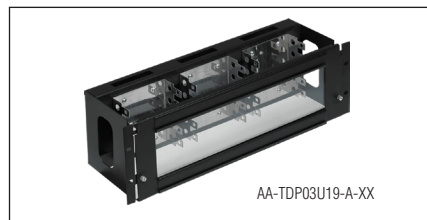
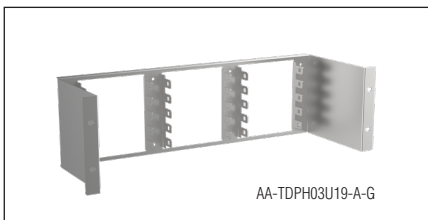


19" mounting panels are multi-purpose accessories used in cases of need such as electrical distribution operations in the 19" cabinet with the options of mounting panels made of metal material, automat rail or perforated empty mounting panels.

MOUNTING PANELS						
Product Code	Product Description	Width (w) (mm)	Depth (D) (mm)	Height(H) (mm)	Weight (Net) (kg)	Weight (Gross) (kg)
AA-MNP-01U19150T-A-G	01U 19 INCH D=150MM INCLUDING PERFORATED MOUNTING PANEL AUTOMATON RAIL (GLV)	482	150	44	0,54	0,64
AA-MNP-02U19150T-A-G	02U 19 INCH D=150MM INCLUDING PERFORATED MOUNTING PANEL AUTOMATON RAIL (GLV)	482	150	88	1	1,1
AA-MNP-03U19150T-A-G	03U 19 INCH D=150MM INCLUDING PERFORATED MOUNTING PANEL AUTOMATON RAIL (GLV)	482	150	133	1,22	1,32
AA-MNP-01U1915-A-G	01U 19 INCH D=150MM PERFORATED MOUNTING PANEL (GALVANIZ)	482	150	44	0,395	0,49
AA-MNP-02U1915-A-G	02U 19 INCH D=150MM PERFORATED MOUNTING PANEL (GALVANIZ)	482	150	88	0,79	0,8
AA-MNP-05U1915-A-G	05U 19 INCH D=150MM PERFORATED MOUNTING PANEL (GALVANIZ)	482	150	133	2	2,1

XX = Colour Code, B1 White RAL 7035, S1 Black RAL 9005, during order please specify the colour choice.  
YY = M1 for pre-assembled, D1 for flat pack.

## TELEPHONE DISTRIBUTION MODULES

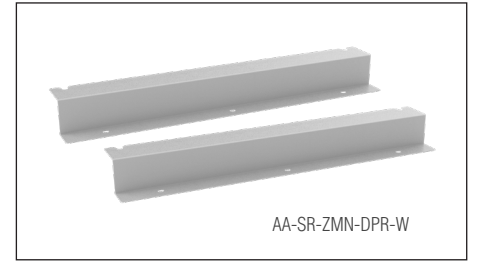
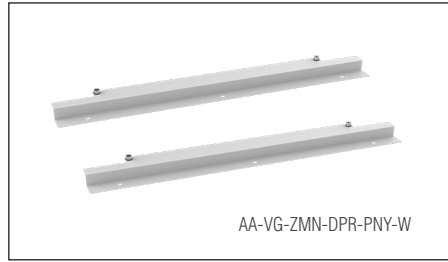
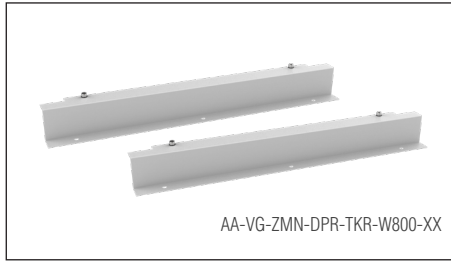


19" Rack produced for standard cabinets, Metal and stainless steel options, Open and closed system, Telephone, patch panel Krone sound module VDF distribution modules.

TELEPHONE DISTRIBUTION MODULES						
Product Code	Product Description	Width (w) (mm)	Depth (D) (mm)	Height(H) (mm)	Weight (Net) (kg)	Weight (Gross) (kg)
AA-TDPH03U19-A-G	03U 19INCH TELEPHONE DISTRIBUTION MODULE GALVANIZED	487	160	133	0,72	0,82
AA-TDPH03U19-A-PSL	03U 19INCH PHONE DISTRIBUTION MODULE STAINLESS STEEL	487	160	133	0,72	0,82
AA-TDP03U19-A-XX-YY	3U 19 INCH TELEPHONE DISTRIBUTION PANEL WITH 15 MODULE CAPACITY	487	160	133	1,7	1,8

XX = Colour Code, B1 White RAL 7035, S1 Black RAL 9005, during order please specify the colour choice.  
YY = M1 for pre-assembled, D1 for flat pack.

## FLOOR CONNECTION KITS



Designed for floor connection of vertical type cabinets. Protects cabinets against tipping over in earthquakes or tremors. Cabinet width is long. Connection is made to the cabinet and floor. Earthquake connection kits are sold as a set. There are 2 pieces in a set.

### FLOOR CONNECTION KITS

Product Code	Product Description	Width (w) (mm)	Depth (D) (mm)	Height(H) (mm)	Weight (Net) (kg)	Weight (Gross) (kg)
AA-VG-ZMN-DPR-TKR-W800-XX-YY	FREE STANDING TYPE W=800mm FLOOR CONNECTION KIT - 1 SET 2 PCS, FRONT and REAR APPLICATION (WITH WHEELED CABINET)	800	95	82	3,5	3,8
AA-VG-ZMN-DPR-TKR-W600-XX-YY	FREE STANDING TYPE W=600mm FLOOR CONNECTION KIT - 1 SET 2 PCS, FRONT and REAR APPLICATION (WITH WHEELED CABINET)	600	95	82	2,5	2,8
AA-VG-ZMN-DPR-PNY-W800-XX-YY	FREE STANDING TYPE W=800mm FLOOR CONNECTION KIT - SET 2 PCS, FRONT and REAR APPLICATION (WITH WHEELED CABINET)	800	30	82	2,25	2,6
AA-VG-ZMN-DPR-PNY-W600-XX-YY	FREE STANDING TYPE W=600mm FLOOR CONNECTION KIT - 1 SET 2 PCS, FRONT and REAR APPLICATION (WITH WHEELED CABINET)	600	30	82	1,6	1,9
AA-SR-ZMN-DPR-W600-XX-YY	SERVER W=600mm FLOOR CONNECTION KIT - 1 SET 2 PCS, FRONT and REAR APPLICATION	800	60	99	2	2,3
AA-SR-ZMN-DPR-W800-XX-YY	SERVER W=800mm FLOOR CONNECTION KIT - 1 SET 2 PCS, FRONT and REAR APPLICATION	600	60	99	1,5	1,8

XX = Colour Code, B1 White RAL 7035, S1 Black RAL 9005, during order please specify the colour choice.  
YY = M1 for pre-assembled, D1 for flat pack.

## MOUNTING RAILS



19" Device mounting struts are intended to ensure the connection of the devices in the cabinet. Additional use may be required for mounting devices of different depths. If the number of device uprights available in the standard shipment configuration is not sufficient, they can be ordered. 1,5mm thick accessories formed by bending the metal material. Marked U Numbering is available. 1 set: 2 pieces.

### DEVICE MOUNTING RAILS

Product Code	Product Description	Width (w) (mm)	Depth (d) (mm)	Height (h) (mm)	Weight (Net) (kg)	Weight (Gross) (kg)
AA-AN-CID07U-A	AGENA 07U MOUNTING RAILS (GLV) (1 SET=2 PCS)	31	62	312,8	0,7	0,8
AA-AN-CID09U-A	AGENA 09U MOUNTING RAILS (GLV) (1 SET=2 PCS)	31	62	401,7	0,9	1
AA-AN-CID12U-A	AGENA 12U MOUNTING RAILS (GLV) (1 SET=2 PCS)	31	62	535	1,2	1,3
AA-AN-CID16U-A	AGENA 16U MOUNTING RAILS (GLV) (1 SET=2 PCS)	31	62	712,9	1,6	1,7
AA-AN-CID20U-A	AGENA 20U MOUNTING RAILS (GLV) (1 SET=2 PCS)	31	62	890,65	2	2,1
AA-AB-CID07U-A	AGENA BASE 07U MOUNTING RAILS (GLV) (1 SET=2 PCS)	47	21	382,75	0,6	0,7
AA-AB-CID09U-A	AGENA BASE 09U MOUNTING RAILS (GLV) (1 SET=2 PCS)	47	21	471,65	0,8	0,9
AA-AB-CID12U-A	AGENA BASE 12U MOUNTING RAILS (GLV) (1 SET=2 PCS)	47	21	604,95	1	1,1
AA-AB-CID16U-A	AGENA BASE 16U MOUNTING RAILS (GLV) (1 SET=2 PCS)	47	21	782,85	1,5	1,6
AA-AB-CID20U-A	AGENA BASE 20U MOUNTING RAILS (GLV) (1 SET=2 PCS)	47	21	960,6	1,8	1,9
AA-AC-CID07U-A	AGENA COMPACT 07U MOUNTING RAILS (GLV) (1 SET=2 PCS)	47	20	362,4	0,6	0,7
AA-AC-CID09U-A	AGENA COMPACT 09U MOUNTING RAILS (GLV) (1 SET=2 PCS)	47	20	451,3	0,8	0,9
AA-AC-CID12U-A	AGENA COMPACT 12U MOUNTING RAILS (GLV) (1 SET=2 PCS)	47	20	584,6	1	1,1
AA-AC-CID16U-A	AGENA COMPACT 16U MOUNTING RAILS (GLV) (1 SET=2 PCS)	47	20	762,5	1,5	1,6
AA-AC-CID20U-A	AGENA COMPACT 20U MOUNTING RAILS (GLV) (1 SET=2 PCS)	47	20	940,25	1,8	1,9
AA-OT-CID07U-A	OUTDOOR 07U MOUNTING RAILS (GLV) (1 SET=2 PCS)	31	62	312,8	0,7	0,8
AA-OT-CID09U-A	OUTDOOR 09U MOUNTING RAILS (GLV) (1 SET=2 PCS)	31	62	401,7	0,9	1
AA-OT-CID12U-A	OUTDOOR 12U MOUNTING RAILS (GLV) (1 SET=2 PCS)	31	62	535	1,2	1,3
AA-OT-CID16U-A	OUTDOOR 16U MOUNTING RAILS (GLV) (1 SET=2 PCS)	31	62	712,9	1,6	1,7
AA-OT-CID20U-A	OUTDOOR 20U MOUNTING RAILS (GLV) (1 SET=2 PCS)	31	62	890,65	2	2,1
AA-OT-CID22U-A	OUTDOOR 22U MOUNTING RAILS (GLV) (1 SET=2 PCS)	31	62	979,55	2,2	2,3
AA-OT-CID24U-A	OUTDOOR 24U MOUNTING RAILS (GLV) (1 SET=2 PCS)	31	62	1068,45	2,4	2,5
AA-OT-CID26U-A	OUTDOOR 26U MOUNTING RAILS (GLV) (1 SET=2 PCS)	31	62	1246,25	2,6	2,7

DEVICE MOUNTING RAILS

Product Code	Product Description	Width (w) (mm)	Depth (D) (mm)	Height(H) (mm)	Weight (Net) (kg)	Weight (Gross) (kg)
AA-VG-CID07U-A	VEGA 07U MOUNTING RAILS (GLV) (1 SET=2 PCS)	31	62	312,8	0,7	0,8
AA-VG-CID09U-A	VEGA 09U MOUNTING RAILS (GLV) (1 SET=2 PCS)	31	62	401,7	0,9	1
AA-VG-CID12U-A	VEGA 12U MOUNTING RAILS (GLV) (1 SET=2 PCS)	31	62	535	1,2	1,3
AA-VG-CID16U-A	VEGA 16U MOUNTING RAILS (GLV) (1 SET=2 PCS)	31	62	712,9	1,6	1,7
AA-VG-CID20U-A	VEGA 20U MOUNTING RAILS (GLV) (1 SET=2 PCS)	31	62	890,65	2	2,1
AA-VG-CID22U-A	VEGA 22U MOUNTING RAILS (GLV) (1 SET=2 PCS)	31	62	979,55	2,2	2,3
AA-VG-CID24U-A	VEGA 24U MOUNTING RAILS (GLV) (1 SET=2 PCS)	31	62	1068,45	2,4	2,5
AA-VG-CID26U-A	VEGA 26U MOUNTING RAILS (GLV) (1 SET=2 PCS)	31	62	1157,35	2,6	2,7
AA-VG-CID30U-A	VEGA 30U MOUNTING RAILS (GLV) (1 SET=2 PCS)	31	62	1335,15	2	2,1
AA-VG-CID32U-A	VEGA 32U MOUNTING RAILS (GLV) (1 SET=2 PCS)	31	62	1424,05	2,2	2,3
AA-VG-CID36U-A	VEGA 36U MOUNTING RAILS (GLV) (1 SET=2 PCS)	31	62	1601,85	2,4	2,5
AA-VG-CID39U-A	VEGA 39U MOUNTING RAILS (GLV) (1 SET=2 PCS)	31	62	1735,2	2,6	2,7
AA-VG-CID42U-A	VEGA 42U MOUNTING RAILS (GLV) (1 SET=2 PCS)	31	62	1868,55	2,6	2,7
AA-VG-CID47U-A	VEGA 47U MOUNTING RAILS (GLV) (1 SET=2 PCS)	31	62	2090,8	2,6	2,7

XX = Colour Code, B1 White RAL 7035, S1 Black RAL 9005, during order please specify the colour choice.  
YY = M1 for pre-assembled, D1 for flat pack.

CONNECTION KITS



CONNECTION KITS

Product Code	Product Description	Width (w) (mm)	Depth (D) (mm)	Height(H) (mm)	Weight (Net) (kg)	Weight (Gross) (kg)
OF-BLG-XX-YY	OPEN FRAME CABINET CONNECTION KIT (1SET 4PCS)	-	-	-	-	-
SR-BLG-G-XX-YY	SERVER CABINET FRONT AND TOP CABINET CONNECTION KIT	-	-	-	-	-
SR-BLGO-G-XX-YY	SERVER CABINET FRONT CONNECTION KIT 1 SET 8 PIECES	-	-	-	-	-
SR-BLGU-G-XX-YY	SERVER CABINET TOP CONNECTION KIT 1 SET 2 PIECES	-	-	-	-	-
SR-BLGY-G-XX-YY	SERVER CABINET WITHOUT SIDE COVER CABINET CONNECTION KIT 1 SET 4PCS	-	-	-	-	-
VG-BLG-XX-YY	VEGA CABINET CONNECTION KIT	-	-	-	-	-
VG-BLGY-G-XX-YY	VEGA CABINET SIDE COVERLESS CABINET CONNECTION KIT 1 SET 4 PCS	-	-	-	-	-
AA-VGDKP60-A-XX-YY	VEGA D=600MM DEPTH INNER CLOSING PIECE (1 SET 2 PIECES)	83	31	520	0,94	1,2
AA-VGDKP80-A-XX-YY	VEGA D=800MM DEPTH INNER CLOSING PIECE (1 SET 2 PIECES)	83	31	720	1,4	1,6
AA-VGDKP10-A-XX-YY	VEGA D=1000MM DEPTH INNER CLOSING PIECE (1 SET 2 PIECES)	83	31	920	1,86	2
AA-VGDKP11-A-XX-YY	VEGA D=1100MM DEPTH INNER CLOSURE PART (1 SET 2 PIECES)	83	31	1020	2,09	2,2
AA-VGDKP12-A-XX-YY	VEGA D=1200MM DEPTH INNER CLOSURE PART (1 SET 2 PIECES)	83	31	1120	2,32	2,5

XX = Colour Code, B1 White RAL 7035, S1 Black RAL 9005, during order please specify the colour choice.  
YY = M1 for pre-assembled, D1 for flat pack.